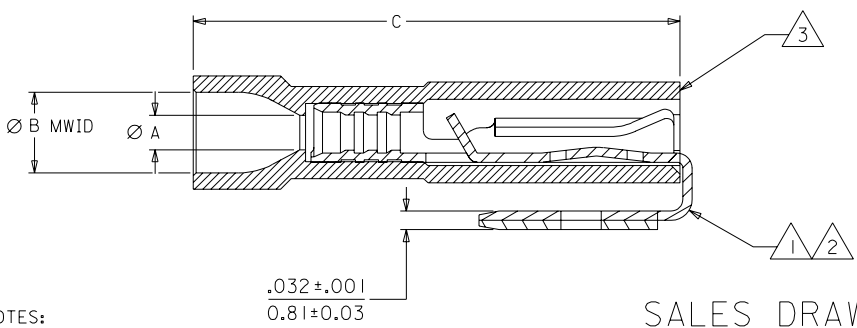
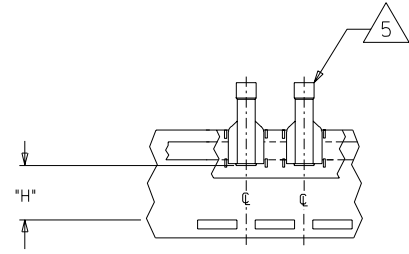
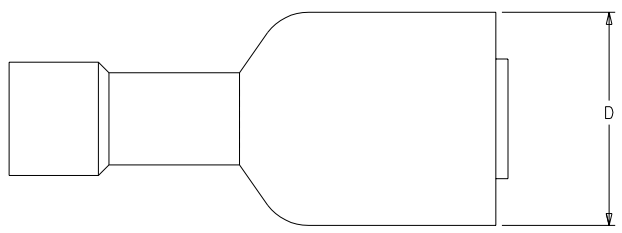


SD-19013-001

MATERIAL NUMBER	ENGINEERING NUMBER	MATERIAL NUMBER	ENGINEERING TAPE NUMBER	WIRE SIZE	INSULATION COLOR	A MAX	4 B MWID	C	D	H
190130001	AA-2317	190130002	AA-2317T	22-18 AWG	RED	.062/(1.57)	.140/(3.56)	.85/(21.6)	.37/(9.4)	.540/13.7
190130005	BB-2318	190130006	BB-2318T	16-14 AWG	BLUE	.087/(2.21)	.165/(4.19)	.85/(21.6)	.37/(9.4)	.540/13.7
190130018	C-2319	190130016	C-2319T	12-10 AWG	YELLOW	.155/(3.94)	.280/(7.11)	1.02/(25.9)	.36/(9.1)	.565/14.5



- NOTES:
- 1. TERMINAL MATERIAL: BRASS
 - 2. TERMINAL FINISH: ELECTRO-TIN
 - 3. INSULATION: NYLON
 - 4. MWID = MAXIMUM WIRE INSULATION DIAMETER
 - 5. MOUNTED WITH BARE TAB TO TAPE.

SALES DRAWING

WAS CD-2909 EC NO. E12003-0225 DRAWN: BRE CHK: HEB APPR: RWD	DESCRIPTION MAJOR CRITICAL	GENERAL TOLERANCES: (UNLESS SPECIFIED)		SCALE NO: NE	DESIGN UNITS <input type="checkbox"/> mm <input checked="" type="checkbox"/> INCH	THIRD ANGLE PROJECTION	DIMENSIONS: <input type="checkbox"/> mm <input checked="" type="checkbox"/> INCH	SHT	REV
		4 PLACES ±0.1	±.005	BRE	03/03/19	TITLE: INSULKRIMP FIOD PIGGYBACK .250 X .032 TAB SIZE	REVISE ON CAD ONLY		
REV B		3 PLACES ±0.13	±.01	CHECKED BY & DATE HEB 03/03/19	APPROVED BY & DATE RWD 03/03/19	MATERIAL NO. SEE CHART		DRAWING NO. SD-19013-001	
		2 PLACES ±0.25	±.01	CAD FILENAME SD-19013-001.DGN		SHEET NO.		SIZE B	
DRAFT WHERE APPLICABLE MUST REMAIN WITHIN DIMENSIONS		THIS DRAWING CONTAINS INFORMATION THAT IS PROPRIETARY TO MOLEX INCORPORATED AND SHOULD NOT BE USED WITHOUT WRITTEN PERMISSION.							

LBORD.DGN REV A
96/06/12 LEVEL 4