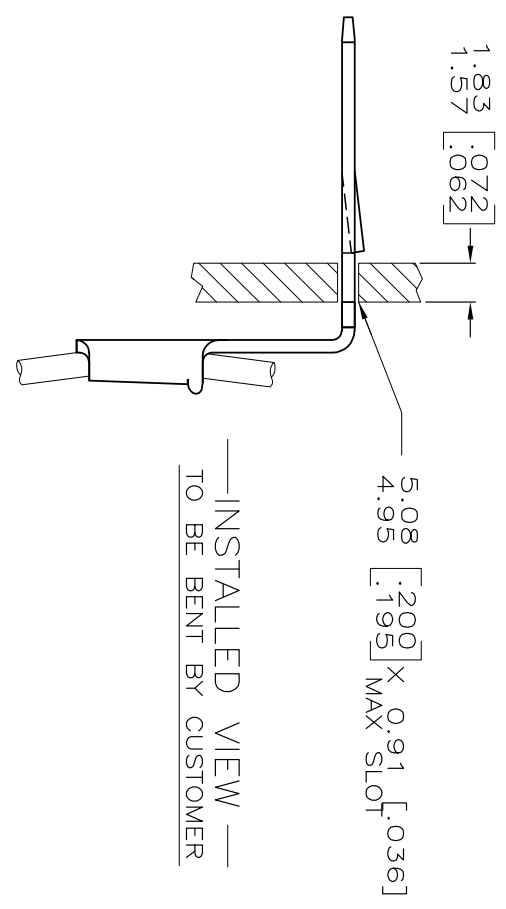
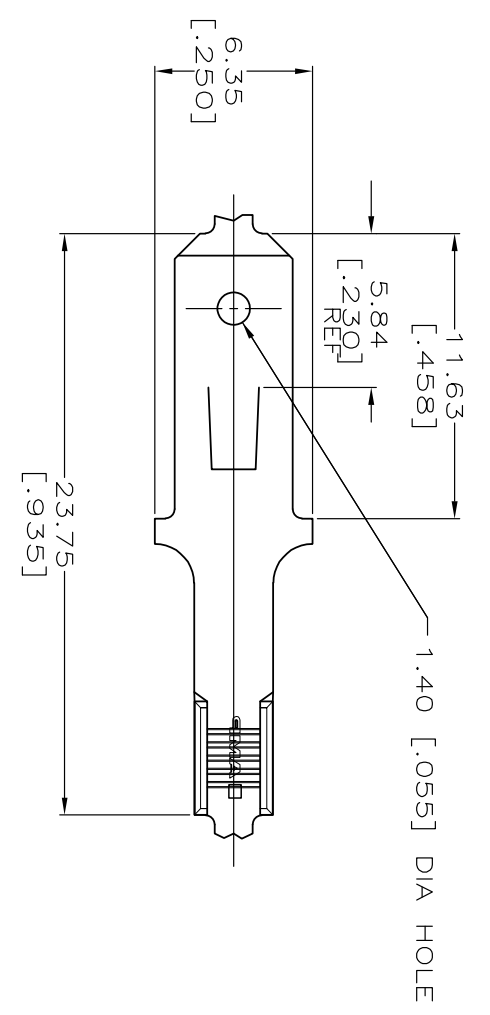


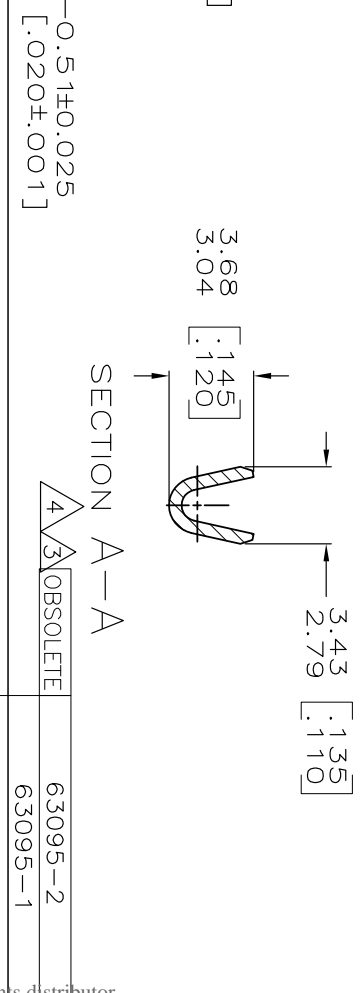
DRAWING MADE IN THIRD ANGLE PROJECTION
 THIS DRAWING IS UNPUBLISHED. RELEASED FOR PUBLICATION BY AMP INCORPORATED. ALL INTERNATIONAL RIGHTS RESERVED.
 COPYRIGHT 19

LOC	DIST	P	F	ZONE	LTR	REVISIONS	DESCRIPTION	DATE	APPD
AF	50					C1	REVISED PER ECO-09-020774	25AUG09	KK/JEG



— INSTALLED VIEW —
 TO BE BENT BY CUSTOMER

- 1 CONTINUOUS STRIP ON REELS.
- 2 WIRE SIZE.
- 3 REVERSE REEL OF 63095-1.
- 4 OBSOLETE PARTS: OBSOLETE CIS STREAMLINING PER D.RENAUD/D.SINISI



FLAT WITHIN 0.13 [.005]
 0.94 [.037]
 0.81 [.032]
 3.05 [.120]
 2.54 [.100]
 4.70 [.185]
 0.514±.025 [.020±.001]

DO NOT SCALE PRINT. UNLESS SPECIFIED DIMENSIONS IN MILLIMETERS [INCHES]		DR	4/1/96	NAME	AMP
1 P.C. DEC ± 0.38 [019]		CHK	4/1/96	SIZE	B
2 P.C. DEC ± 0.38 [019]		APPD	MS FEHRER	CAGE CODE	00779
3 P.C. DEC ± 0.38 [019]		APPD	J HIZVAR	DRAWING NO	63095
MATERIAL		APPD	V KARADREVSCH	SHEET	1 OF 1
082 BRASS		PRODUCT SPEC		TAB, FASTON, AMPLIVAR, 4.75 [.187] SERIES	
FINISH		APPLICATION SPEC		AMP Incorporated Harrisburg, PA 17105-3608	
0.002032 [.000080] MIN TIN		WEIGHT		CUSTOMER DRAWING	

AMP 1470-15 REV 3-92
 THIS DRAWING IS A CONTROLLED DOCUMENT FOR AMP AND THE INFORMATION CONTAINED HEREIN IS UNCLASSIFIED EXCEPT WHERE SHOWN OTHERWISE. ANY CHANGES TO THIS DRAWING SHOULD BE CONTACTED FOR THE LATEST REVISION.
 FORMING OF 071003, 150248, (YMMWDJHMMSS) 1997
 Copyright © AMP Incorporated, Inc., Harrisburg, PA 17105-3608