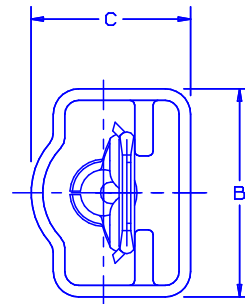
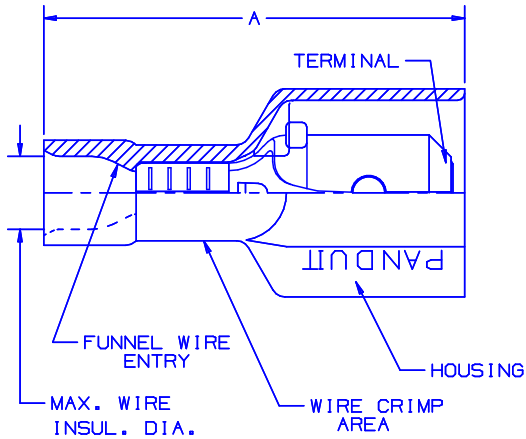


THIS COPY IS PROVIDED ON A RESTRICTED BASIS AND IS NOT TO BE USED IN ANY WAY DETRIMENTAL TO THE INTERESTS OF PANDUIT CORP.

NOTES:

- UL LISTED AND CSA CERTIFIED FOR:
  - 600V MAX. VOLTAGE RATING.
  - 221°F (105°C) MAX. TEMP. RATING (CSA).
  - 257°F (125°C) MAX. TEMP. RATING (UL).
  - STRANDED COPPER WIRE ONLY.



- MATERIAL:
  - STAMPING-CDA 260 BRASS, NICKEL PLATED
  - HOUSING-TYPE 6/6 NYLON
- DIMENSIONS IN BRACKETS ARE IN mm OR mm<sup>2</sup>
- COLORS ARE TRANSLUCENT
- WIRE STRIP LENGTH: 9/32 <sup>+1/32</sup><sub>0</sub> (7.1 <sup>+0.8</sup><sub>0</sub>)
- PACKAGE QTY -C=100  
-M=1000

PART NUMBER	TAB SIZE	WIRE RANGE AWG	COLOR (note 4)	MAX. INSUL.	DIMENSIONS in			CRIMP TOOLS
					A <sup>±.03</sup>	B <sup>±.02</sup>	C <sup>±.02</sup>	
DNF18-250F1M	.250 X .032 (6.3 X 0.8)	22-18 (0.5-1.5)	RED	.133 (3.38)	.90 (22.9)	.42 (10.7)	.27 (6.9)	CT-520 CT-1525
DNF14-250F1M	.250 X .032 (6.3 X 0.8)	16-14 (1.5-2.5)	BLUE	.158 (4.01)	.90 (22.9)	.42 (10.7)	.27 (6.9)	



A41325\_07

07	7/03	KLFU		ADDED INTERNAL SERRATIONS				 TINLEY PARK, ILLINOIS
06	2/01	KMD	JAC	DRAWING NUMBER WAS 41325A	09052	TRO	JAC	
05	5/98	TM	RS	ADDED CT-1525 TO TOOL CHART, WAS TIN PLATED	06872			
04	10/94	TH	RS	UPDATED NOTES AND DIMENSIONS	02553	TK	LA	
REV	DATE	BY	CHK	DESCRIPTION	ECN #	PM	CUST	DRAWN BY JV    CHK'D LM    SCALE  DRAWING NO. A41325