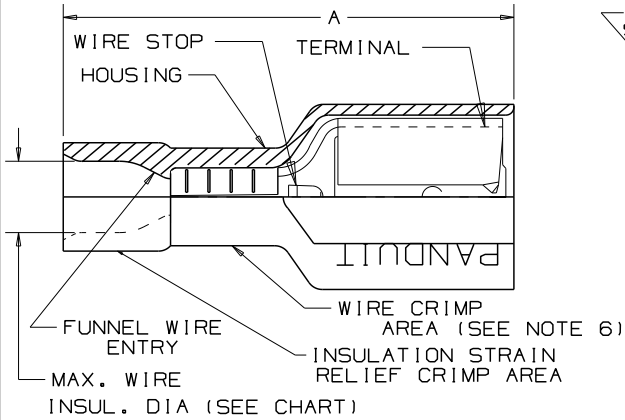
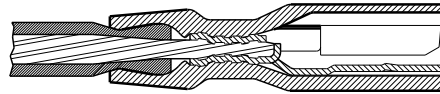
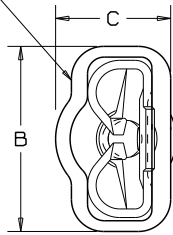


THIS COPY IS PROVIDED ON A RESTRICTED BASIS AND IS NOT TO BE USED IN ANY WAY DETRIMENTAL TO THE INTERESTS OF PANDUIT CORP.



WIRE AND RECEPTACLE SIZES ARE IDENTIFIED ON HOUSING



SECTION VIEW OF CRIMPED DISCONNECT

NOTES:

- USED FOR:
 - A: 600V MAX VOLTAGE RATING
 - B: 221°F (105°C) MAX TEMP RATING
 - C: STRANDED COPPER WIRE ONLY
 - D: 6-12 LBS INITIAL INSERTION/WITHDRAWAL FORCE
- PACKAGE QTY: -M=1000 PIECES -D=500 PIECES -C=100 PIECES -L=50 PIECES
- MATERIAL:
 - A: STAMPING-CDA 260 BRASS, TIN PLATED
 - B: HOUSING-PREMIUM GRADE NYLON FOR SUPERIOR STRAIN RELIEF INSULATION CRIMPING
- DIMENSIONS IN BRACKETS ARE IN mm OR mm2
- NYLON HOUSING IS OPAQUE
- THE DPF10-250F1 IS CONSTRUCTED WITH AN ADDITIONAL BRASS SLEEVE IN THE CRIMP AREA
- DPF10-250F1B IS UL APPROVED FOR USE WITH THE FOLLOWING WIRE COMBINATIONS: (2) #14, (2) #16, (2) #18 TWIST WIRES TOGETHER BEFORE CRIMPING

PART NUMBER	PKG. SUFFIX	TAB SIZE	WIRE RANGE AWG (mm) ²	COLOR (note 5)	MAX. WIRE INSULATION DIAMETER	MIN. WIRE INSULATION DIAMETER	DIMENSIONS in.			WIRE STRIP LENGTH	TOOL CHART
							A ±.03 (.8)	B ±.01 (.3)	C ±.01 (.3)		
DPF18-250F1BR	-C	.250 X .032 (6,3 X 0,8)	22-18 (0,5-1,0)	RED	.106 (2,69)	.060 (1,52)	.84 (21,3)	.35 (8,9)	.22 (5,6)	9/32 ^{+1/32} ₀ (7,1 ^{+0,8} ₀)	CT-1525
DPF18-205F1BR	-C	.205/ .187 X .032 (5,2/4,8 X .8)	22-18 (0,5-1,0)	RED	.106 (2,69)	.060 (1,52)	.78 (19,8)	.31 (7,9)	.22 (5,6)		
DPF18-206F1BR	-C	.205/ .187 X .020 (5,2/4,8 X .5)	22-18 (0,5-1,0)	RED	.106 (2,69)	.060 (1,52)	.78 (19,8)	.31 (7,9)	.22 (5,6)		
DPF18-250F1B	-M	.250 X .032 (6,3 X 0,8)	22-18 (0,5-1,0)	RED	.133 (3,38)	.060 (1,52)	.84 (21,3)	.35 (8,9)	.22 (5,6)		
DPF18-205F1B	-M	.205/ .187 X .032 (5,2/4,8 X .8)	22-18 (0,5-1,0)	RED	.133 (3,38)	.060 (1,52)	.78 (19,8)	.31 (7,9)	.22 (5,6)		
DPF18-206F1B	-M	.205/ .187 X .020 (5,2/4,8 X .5)	22-18 (0,5-1,0)	RED	.133 (3,38)	.060 (1,52)	.78 (19,8)	.31 (7,9)	.22 (5,6)		
DPF14-250F1B	-M	.250 X .032 (6,3 X 0,8)	16-14 (1,5-2,5)	BLUE	.156 (3,96)	.090 (2,29)	.84 (21,3)	.35 (8,9)	.22 (5,6)		
DPF14-205F1B	-M	.205/ .187 X .032 (5,2/4,8 X .8)	16-14 (1,5-2,5)	BLUE	.156 (3,96)	.090 (2,29)	.78 (19,8)	.31 (7,9)	.22 (5,6)		
DPF14-206F1B	-M	.205/ .187 X .020 (5,2/4,8 X .5)	16-14 (1,5-2,5)	BLUE	.156 (3,96)	.090 (2,29)	.78 (19,8)	.31 (7,9)	.22 (5,6)		
DPF10-250F1B	-L	.250 X .032 (6,3 X 0,8)	12-10 (4,0-6,0)	YELLOW	.220 (5,59)	.140 (3,56)	.96 (24,4)	.35 (8,9)	.23 (5,8)		
DPF10-250F1*	-L	.250 X .032 (6,3 X 0,8)	12-10 (4,0-6,0)	YELLOW	.218 (5,54)	.140 (3,56)	.95 (24,1)	.36 (9,1)	.27 (6,9)	3/8 ^{+1/32} ₀ (9,5 ^{+0,8} ₀)	CT-1550 CT-1551 CT-550

UL LISTED 20H3 E78522

SP CERTIFIED LR31212

*DPF10-250F1 IS NOT UL LISTED OR CSA CERTIFIED

Panduit part numbers shown on this drawing meet the material requirements of RoHS (EUROPEAN DIRECTIVES 2002/95/EC) as proposed by the Technical Adaptation Committee.

PANDUIT

CORP. TINLEY PARK, ILLINOIS

10	02/09	BCT		ADDED NOTE TO TWIST MULTIPLE WIRES TOGETHER PRIOR TO CRIMPING WITH THE DPF10-250F1B							
09	02/08	SRB		Added New Part numbers DPF18-205F1BR-C, DPF18-206F1BR-C, DPF18-250F1BR-C.							
REV	DATE	BY	CHK	DESCRIPTION	ECN #	CUST	PM	DRAWN BY KRC	CHK'D LA	SCALE NONE	DRAWING NO./CAD FILENAME A41462

DISCOGRIP™ LOOSE PIECE FULLY INSULATED FEMALE DISCONNECTS .250 X .032, .205 X .032/.020