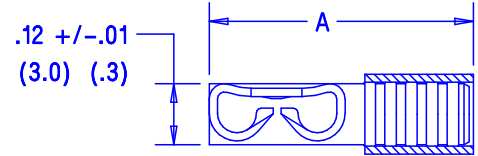


THIS COPY IS PROVIDED ON A RESTRICTED BASIS AND IS NOT TO BE USED IN ANY WAY DETRIMENTAL TO THE INTERESTS OF PANDUIT CORP.

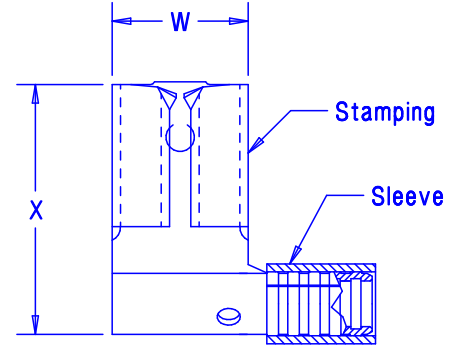
Part number		Tab size	Wire range AWG	Dimensions (inches)		
Prefix	PK			X ^{+/--.02}	W ^{+/--.01} _(.5)	A ^{+/--.03} _(.3)
DR18-250	-C -M	.250 X .032 (6.3 X 0.8)	22-18	.54 (13.7)	.30 (7.6)	.57 (14.5)
* DR14-250	-C -M	.250 X .032 (6.3 X 0.8)	16-14	.55 (14.0)	.30 (7.6)	.57 (14.5)
DR10-250	-L -D	.250 X .032 (6.3 X 0.8)	12-10	.57 (14.5)	.30 (7.6)	.61 (15.5)

(.8)



Notes:

- Used for:
 - A. 302° F (150° C) maximum temperature rating
 - B. Stranded copper wire only
 - C. 10A. max (DR14-250 only)
- Material:
 - A. Stamping: .018" (0.46) thick tin plated brass
 - B. Sleeve : Tin plated brass
- Package quantity:
 - A. Standard: -C = 100, -L = 50
 - B. Bulk : -M = 1000, -D = 500
- First insertion force: 12 Lb (53 N) maximum
First withdrawal force: 12 Lb (53 N) maximum
6 Lb (27 N) minimum
- Dimensions in brackets are in millimeters or mm²
- Installation tools: (UL listed, UL recognized & CSA certified)
 - A. DR18-250 & DR14-250: CT-100, CT-200, CT-570, CT-1570
 - B. DR10-250: CT-570, CT-1570, CT-100, CT-200
 - C. PANDUIT APPROVED INSTALLATION TOOLS: CT-160, CT-260, CT-1701 (DR10-250 ONLY).
- Wire Strip Length: 9/32 ^{+1/32}₋₀ (7.1 ⁺⁸₋₀)



LISTED
20H3
E78522



CERTIFIED
LR31212



RECOGNIZED
E78522

A41331-08

08	4/04	JHNU		REVISED NOTE #6					<p>TINLEY PARK, ILLINOIS</p> <p>Non-insulated, sleeved right angle female disconnect, .250 series</p>
07	1/01	RM	SKB	FILESPEC WAS N41331AA_PCD_06	8925	JAC	CCH		
06	3/99	JKD		ADDED CT-1570 TOOL	07632				
5	9-94	MS	RLS	Update Dimensions	02494	LCA	DBH		
REV	DATE	BY	CHK	DESCRIPTION	ECN	CUST	PM	APP	DRAWN BY: DAW CHK'D: SCALE: None DRAWING NO.: A41331