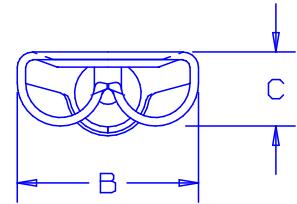


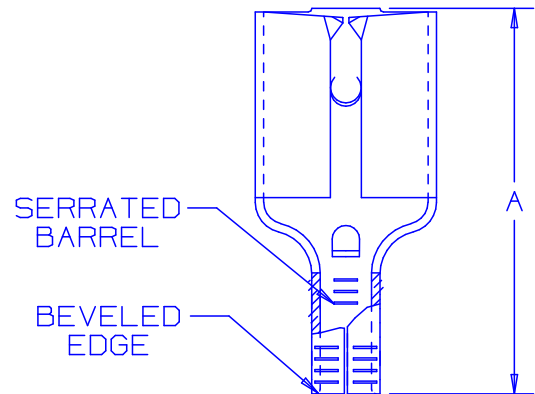
THIS COPY IS PROVIDED ON A RESTRICTED BASIS AND IS NOT TO BE USED IN ANY WAY DETRIMENTAL TO THE INTERESTS OF PANDUIT CORP.

PART NUMBER	TAB SIZE	WIRE RANGE AWG	DIMENSIONS in.		
			A $\pm .015$	B $\pm .010$	C $\pm .010$
D18-250B	.250 X .032 (6.4 X 0.8)	22-18	.63 (16.0)	.30 (7.6)	.12 (3.0)
D14-250B	.250 X .032 (6.4 X 0.8)	16-14	.63 (16.0)	.30 (7.6)	.12 (3.0)



NOTES:

- USED FOR:
A. STRANDED COPPER WIRE ONLY
B. 302°F (150°C) MAX TEMP RATING
- PACKAGE QTY:
A. STD: C=100
B. BULK: M=1000
- MATERIAL:
A. STAMPING: .016 (0.41) THK BRASS, TIN PLATED
- WIRE STRIP LENGTH $9/32 \begin{matrix} +1/32 \\ -0 \end{matrix}$ (7.1 $\begin{matrix} +0.8 \\ -0 \end{matrix}$)
- FIRST INSERTION FORCE: 12 LB (53N) MAX
FIRST WITHDRAWAL FORCE: 12 LB (53N) MAX
6 LB (27N) MIN
- INSTALLATION TOOLS:
A. CT-100 (POCKET B)
- DIMENSIONS IN BRACKETS ARE IN MILLIMETERS OR mm²



CERTIFIED
LR31212

A41209_07

07	7/03	KLFU		ADDED INTERNAL SERRATIONS						 PANDUIT CORP. TINLEY PARK, ILLINOIS NON-INSULATED FEMALE DISCONNECT (BUTTED SEAM)	
06	1/01	KMD	SKB	CAD FILE SPEC. WAS N41209AA_PCD_05	8938	JAC	CCH				
05	6-95	MS		UPDATED NOTES AND DIMENSIONS	03372						
04	8-88	DW	MC	REDRAWN WITH REVISIONS			JRB				
REV	DATE	BY	CHK	DESCRIPTION	ECN#	CUST	PM	DRAWN BY DAW	CHK'D	SCALE NONE	DRAWING NO. A41209