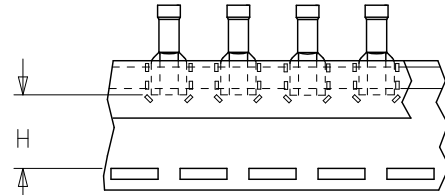
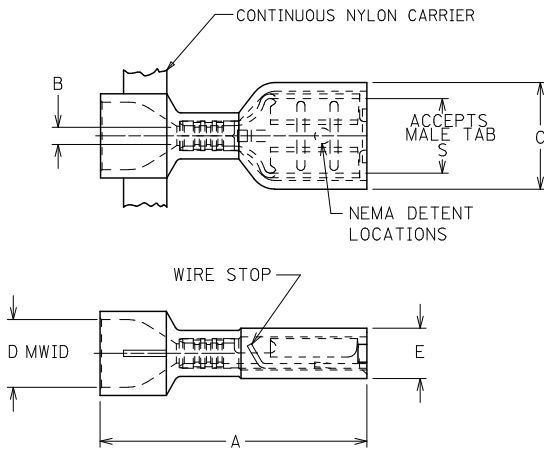


10	9	8	7	6	5	4	3	2					
MATERIAL # LOOSE PCS	MATERIAL # CONTINUOUS	MATERIAL # TAPE MNT	ENGINEERING PART NO.	INS. COLOR	WIRE RANGE AWG	FITS MALE TAB SIZE	STOCK THICK REF	"A" MAX	"B" MIN	"C" MAX	"D" MWID	"E" MAX	"H" MIN
190030008	190030009	190030010	AA-2201X	SALMON	22-18	.250x.032 (6.35x0.81)	.016 (0.4)	.94 /23.9	.056/1.42	.380 /9.66	.230 /5.84	.180 /4.58	.56/14.2
NOTE 5	NOTE 5	NOTE 5	AA-2213X	SALMON	22-18	.205x.020 (5.21x0.51)	.016 (0.4)	.86 /21.8	.056/1.42	.316 /8.03	.230 /5.84	.160 /4.07	.60/15.3
NOTE 5	NOTE 5	NOTE 5	AA-2214X	PINK	22-18	.205x.032 (5.21x0.81)	.016 (0.4)	.86 /21.8	.056/1.42	.316 /8.03	.230 /5.84	.160 /4.07	.60/15.3
190030014	190030015	190030016	AA-2202X	SALMON	22-18	.187x.020 (4.75x0.51)	.016 (0.4)	.86 /21.8	.056/1.42	.316 /8.03	.230 /5.84	.160 /4.07	.60/15.3
190030021	190030022	190030023	AA-2203X	PINK	22-18	.187x.032 (4.75x0.81)	.016 (0.4)	.86 /21.8	.056/1.42	.316 /8.03	.230 /5.84	.160 /4.07	.60/15.3
190030027	190030028	190030029	AA-2204X	SALMON	22-18	.110x.020 (2.79x0.51)	.012 (0.3)	.86 /21.8	.056/1.42	.230 /5.85	.230 /5.84	.150 /3.81	.61/15.5
190030033	190030034	190030035	AA-2205X	PINK	22-18	.110x.032 (2.79x0.81)	.012 (0.3)	.86 /21.8	.056/1.42	.230 /5.85	.230 /5.84	.150 /3.81	.61/15.5
190030047	190030048	190030049	BB-2206X	BLUE	16-14	.250x.032 (6.35x0.81)	.016 (0.4)	.94 /23.9	.079/2.00	.380 /9.66	.260 /6.60	.180 /4.58	.56/14.2
NOTE 5	NOTE 5	NOTE 5	BB-2215X	BLUE	16-14	.205x.020 (5.21x0.51)	.016 (0.4)	.86 /21.8	.079/2.00	.316 /8.03	.260 /6.60	.170 /4.32	.60/15.3
NOTE 5	NOTE 5	NOTE 5	BB-2216X	AQUA	16-14	.205x.032 (5.21x0.81)	.016 (0.4)	.86 /21.8	.079/2.00	.316 /8.03	.260 /6.60	.170 /4.32	.60/15.3
190030053	190030054	190030055	BB-2207X	BLUE	16-14	.187x.020 (4.75x0.51)	.016 (0.4)	.86 /21.8	.079/2.00	.316 /8.03	.260 /6.60	.170 /4.32	.60/15.3
190030059	190030060	190030061	BB-2208X	AQUA	16-14	.187x.032 (4.75x0.81)	.016 (0.4)	.86 /21.8	.079/2.00	.316 /8.03	.260 /6.60	.170 /4.32	.60/15.3
190050010	190050014	190050015	C-2265	YELLOW	12-10	.250x.032 (6.35x0.81)	.018 (0.5)	1.04 /26.4	.144 /3.65	.380 /9.66	.275 /6.98	.290 /7.37	.51/12.9



CUSTOMER DRAWING

1. MATERIAL: BRASS
2. FINISH: ELECTRO-TIN PLATING
3. INSULATION: NYLON
4. MWID= MAXIMUM WIRE INSULATION DIAMETER
5. CONSULT FACTORY FOR AVAILABILITY
6. PART IS ROHS COMPLIANT.

ID, H TOLERANCES DEC. NO. WNA2011-0433 DRAWN:ETHRODAHL 2011/02/28 CHKD:JMACNEIL 2011/02/28 APPR:JMACNEIL 2011/03/03 DESCRIPTION B1	QUALITY SYMBOLS ▽=0 ▽=0	GENERAL TOLERANCES (UNLESS SPECIFIED) mm INCH 4 PLACES ± --- ± --- 3 PLACES ± --- ± --- 2 PLACES ± --- ± --- 1 PLACE ± --- ± --- ANGULAR ± ---°	DIMENSION STYLE IN/MM DRAWN BY RCM DATE 1994/06/17 CHECKED BY JM DATE 1994/06/17 APPROVED BY FP DATE 1994/06/17	SCALE --- DESIGN UNITS INCH THIRD ANGLE PROJECTION	TITLE FULLY INSULATED QUICK DISCONNECTS EXPANDED FLARE MOLEX INCORPORATED
	DRAFT WHERE APPLICABLE MUST REMAIN WITHIN DIMENSIONS	MATERIAL NO. SEE CHART SIZE B	DOCUMENT NO. SD-19003-006 SHEET NO. 1 OF 1	THIS DRAWING CONTAINS INFORMATION THAT IS PROPRIETARY TO MOLEX INCORPORATED AND SHOULD NOT BE USED WITHOUT WRITTEN PERMISSION	