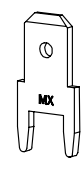
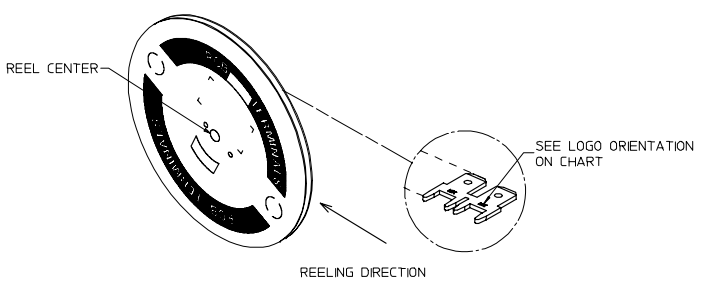
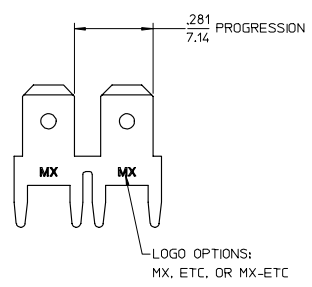
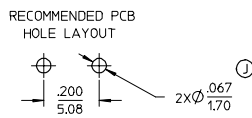
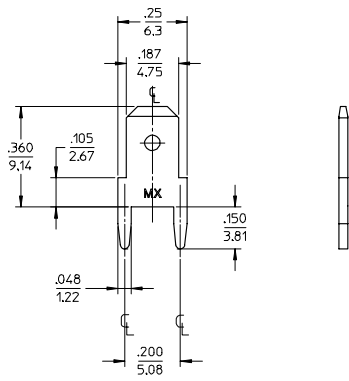


MATERIAL NUMBER	ENGINEERING NUMBER	CARRIER	TAB THICKNESS	LOGO ORIENTATION
197084003	19708-4003	STRIP	.020/0.51	IN
197084013	19708-4013	STRIP	.032/0.81	
197084015	19708-4015	STRIP	.032/0.81	
197084001	19708-4001	LOOSE	.020/0.51	-
197084011	19708-4011	LOOSE	.032/0.81	-



- NOTES:
1. BARE EDGES PERMISSIBLE AT CARRIER CUT OFF.
 2. MATERIAL: BRASS C26000
 3. MATERIAL THICKNESS: SEE CHART
 4. TAB CONFORMS TO NEMA SPECIFICATIONS.
 5. ALL DIMENSIONS AND NOTES REFERENCE UNLESS OTHERWISE NOTED.
 6. PLATING: MATTE TIN, 150μIN/3.81μm MINIMUM THICKNESS OVER NICKEL 50μIN/1.25μm MINIMUM THICKNESS.
 7. REF.: 15,000 MINIMUM PARTS PER REEL. REEL HAS 14" DIAMETER REEL WITH A 1.25" DIAMETER CENTER HOLE.
 8. PART IS ROHS COMPLIANT.

ADD LOOSE PC - REV PCB HOLE EC NO. ETC2007-0403 DRAWN BY: JDRW/05/14 CHECKED BY: CHAD/JMC/05/14 APPR: JMC/05/15	QUALITY SYMBOLS ▽=0 ▽=0	GENERAL TOLERANCES (UNLESS SPECIFIED) 4 PLACES ± .005 3 PLACES ± .005 2 PLACES ± .013 1 PLACE ± .025 ANGULAR ± 1°	DIMENSION STYLE IN/MM	SCALE 4:1	DESIGN UNITS INCH	THIRD ANGLE PROJECTION
	DRAWN BY: JH CHECKED BY: RWD APPROVED BY: RWD DATE: 10/18/96	DATE: 10/18/96 DATE: 10/18/96 DATE: 10/18/96	TITLE QUICK DISCONNECT PCB MOUNTABLE .187 X .032/.020 TAB	MATERIAL NO. SEE CHART	DOCUMENT NO. SD-19708-400	SHEET NO. 1 OF 1

tb_frame_C_P_AM_T
Rev. E 2006/04/15