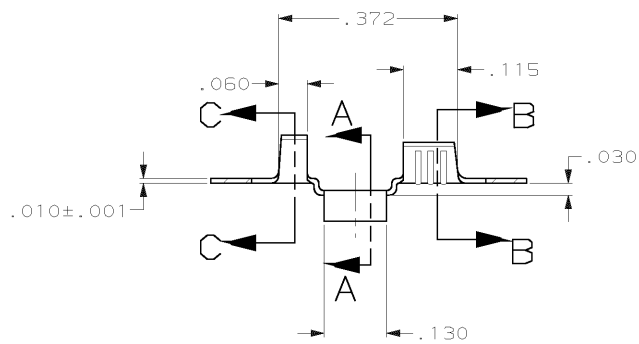
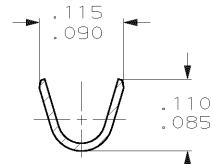
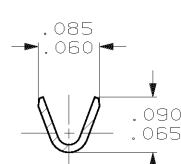
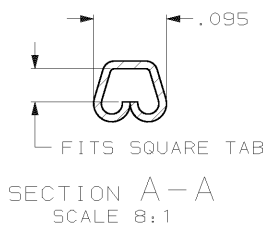


THIS DRAWING IS UNPUBLISHED. RELEASED FOR PUBLICATION, 19
 © COPYRIGHT 19 BY AMP INCORPORATED. ALL INTERNATIONAL RIGHTS RESERVED.

LOC	DIST	P	F	ZONE	LTR	DESCRIPTION	DATE	APPD
AF	50				V	OBS -1 PER 0L10-0216-96	5/28/97	JR/JG

- 1 CONTINUOUS STRIP ON REELS.
- 2 FEED TO BE $.330 \pm .005$.



60524-5	.000080 MIN TIN	H04 BE COPPER	60524-4
60524-8	GOLD OVER NICKEL	H04 BRASS	60524-3
60524-6	.000080 MIN TIN	H04 BRASS	60524-2
60524-7	-	H04 BRASS	60524-1
REVERSE REEL PART NO.	FINISH	MATERIAL	PART NO
DO NOT SCALE PRINT. UNLESS SPECIFIED DIMENSIONS IN mm (INCHES) TOLERANCES ON: 2. PLC DEC ± 3. PLC DEC ± .015 ANGLES # -		DR 1/9/95 JR ROTH CHK 1/9/95 MS FEHER APPD 1/9/95 J SILLESPIE APPD 1/9/95 R REINER	AMP Incorporated Harrisburg, PA 17105-3608
MATERIAL SEE TABLE		PRODUCT SPEC -	NAME RECEPTACLE, TAB, WRAP TYPE
FINISH SEE TABLE		APPLICATION SPEC -	SIZE B
		WEIGHT -	CAGE CODE 00779
			DRAWING NO C=60524
		SCALE 5:1	SHEET 1 OF 1

THIS DRAWING IS A CONTROLLED DOCUMENT FOR AMP INCORPORATED. IT IS SUBJECT TO CHANGE AND THE CONTROLLING ENGINEERING ORGANIZATION SHOULD BE CONTACTED FOR THE LATEST REVISION.