

4

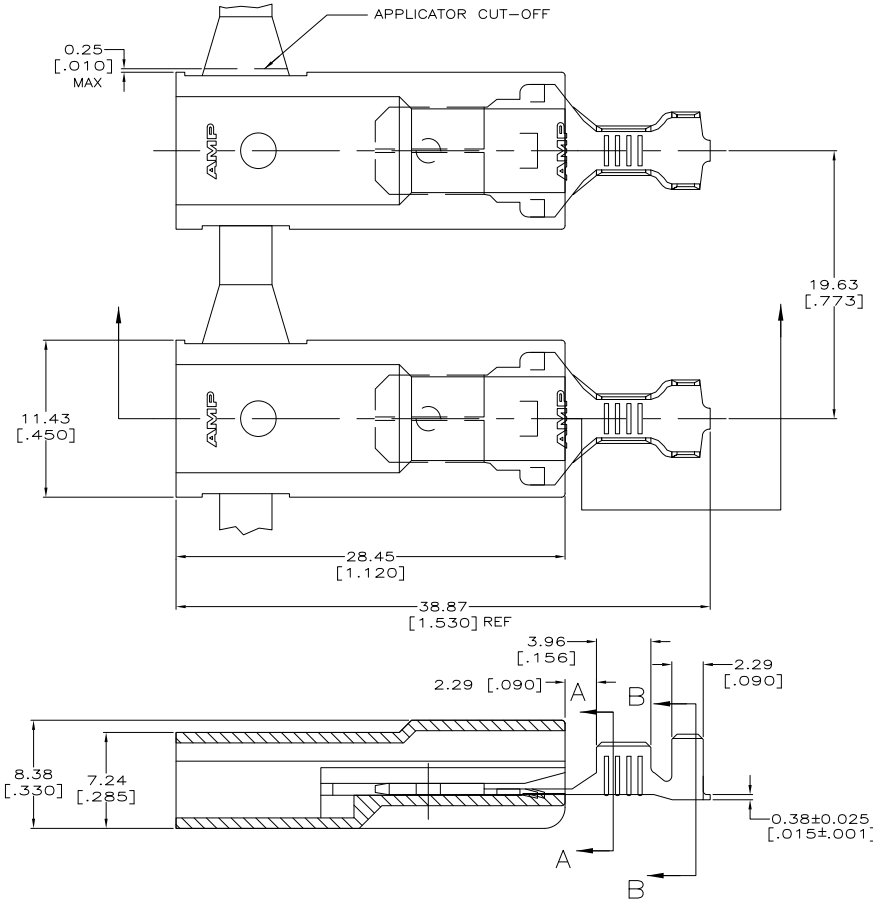
3

2

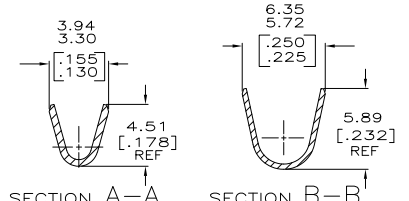
1

THIS DRAWING IS UNPUBLISHED. RELEASED FOR PUBLICATION. BY TYCO ELECTRONICS CORPORATION. ALL INTERNATIONAL RIGHTS RESERVED.

| LOC | DIST | REVISIONS | | | |
|-----|------|-------------|---------------------------|---------|--------|
| F | LNK | DESCRIPTION | DATE | BY | APPD |
| AF | 50 | G1 | REVISED PER ECR-09-010687 | 12MAY09 | HMR GP |



- FASTON TAB BASE #1217166, ARE USED IN THIS PRODUCT.
 - WIRE SIZE IS [#18-#14] AWG.
 - INSULATION RANGE IS 3.30-4.57 [.130-.180] DIA.
 - MATES WITH A 6.35 X 0.81 [.250 X .032] RECEPTACLE.
- △5 MATERIAL & FINISH
 TERMINAL - 082 BRASS, SEE TABLE
 HOUSING - 6/6 NYLON, NATURAL
- △6 PRELIMINARY -NOT FOR PRODUCTION



| | |
|--------------|--------------|
| NICKEL PLATE | 521217-3 / 6 |
| TIN PLATE | 521217-2 |
| - | 521217-1 |
| FINISH | PART NO. |

| | | | | | |
|--|---|------------------|-------------|------------|---|
| THIS DRAWING IS A CONTROLLED DOCUMENT. | | DRN | JR. RUTH | 20MAY99 | Tyco Electronics Corporation Harrisburg, PA 17105-3608 |
| | | CHK | M.S. FEHRER | 20MAY99 | |
| DIMENSIONS: mm [INCHES] | | APPC | HUMMEL | 20MAY99 | ASSEMBLY, TAB, ULTRA-POD, 6.35 [.250] SERIES |
| TOLERANCES UNLESS OTHERWISE SPECIFIED: | | PRDCT SPEC | 108-1285 | | |
| 0 PLG | ± | APPLICATION SPEC | 114-2124 | SIZE | A2 |
| 1 PLG | ± | HEIGHT | - | QGE CODE | C=521217 |
| 2 PLG | ± | | | DRAWING NO | |
| 3 PLG | ± | | | | |
| 4 PLG | ± | | | | |
| ANGLES | ± | | | | |
| MATERIAL | - | FINISH | - | | |
| CUSTOMER DRAWING | | SCALE | 5:1 | SHEET | 1 of 1 |
| | | REV | G1 | | |

1471-9 (1/08)

521217

A