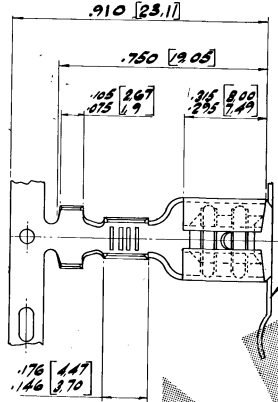


SHEET 7 of 7
 DWG NO. C-150645
 G
 F
 E
 D
 C
 B
 A

DO NOT SCALE

DIMENSIONS IN

3rd ANGLE PROJECTION



PART NO	MATERIAL	FINISH	REMARKS	PART NO	MATERIAL	FINISH	REMARKS
△ OBSOLETE 2-150645-6	BRASS	ELECTRO-TIN	NO CARRIER	150645-1	PUR BRONZE	NONE	
				150645-2	BRASS	NONE	
				150645-3	BRASS	PRE-TIN	
				150645-4	STEEL	NONE	
				150645-5	STEEL	NONE	OBSOLETE
				150645-6	PUR BRONZE	PRE-TIN	NO REAR
				150645-7	STEEL	ELECTRO-TIN	CARRIER
				△ OBSOLETE 150645-8	PUR BRONZE	SILVER	STRIP
				150645-9	NICKEL SILVER	NONE	
				△ OBSOLETE 1-150645-0	BRASS	ELECTRO-TIN	
				1-150645-1	PUR BRONZE	ELECTRO-TIN	
				2-150645-1	PUR BRONZE	NONE	
				2-150645-2	BRASS	NONE	
				2-150645-3	BRASS	PRE-TIN	
				△ OBSOLETE 2-150645-4	PUR BRONZE	PRE-TIN	
				2-150645-5	NICKEL SILVER	NONE	
				3-150645-1	PUR BRONZE	NONE	
				3-150645-2	BRASS	NONE	
				3-150645-3	BRASS	PRE-TIN	WITH REAR
				3-150645-4	STEEL	NONE	CARRIER
				3-150645-5	STEEL	NONE	STRIP
				3-150645-6	PUR BRONZE	PRE-TIN	
				3-150645-7	STEEL	ELECTRO-TIN	
				3-150645-8	PUR BRONZE	SILVER PLATE	
				3-150645-9	NICKEL SILVER	NONE	
				4-150645-0	BRASS	ELECTRO-TIN	
				4-150645-1	PUR BRONZE	ELECTRO-TIN	

SIDES OF U TO BE THE SAME HEIGHT WITHIN .015 [0.38]

SEE "REMARKS" ON THIS CARRIER

.035 [0.89] MAX. PERMISSIBLE AT JOINTS OF TAB

.034 [0.86] / .030 [0.76]

.235 [5.96] / .210 [5.33]

.165 [4.19] / .133 [3.37]

.100 [2.54] / .080 [2.03]

FITS .032 [0.81] TAB

.210 [5.33] / .190 [4.80]

△ OBSOLETE PARTS: OBSOLETE CIS STREAMLINING PER D.RENAUD/D.SINISI

OTHER TREATMENT	FINISH	MATERIAL	PART NUMBER
CUSTOMER DWG FOR REFERENCE ONLY	THIS DRAWING IS UNPUBLISHED UNLESS OTHERWISE STATED	SEE TABLE ABOVE	C-150645-1
T1 REVISED PER ECO-09-025714	DEC ± .015 [0.38]	AMP	TERMINAL HOUSE STANMORE MIDD.
T SASH'S OBSOLETE	ANGLES ± 1°	WIRE TERMINAL	
S 2--6 ADDED (LATE)	DR. DE BRANN, C. S. R. 1/10/47	250 SERIES FASTON BODY BACK	
R 3-1704-1 ADDED	CHK. D. ALLEN 3/1/49		
ISS REVISION RECORD	DATE	A2	LOC. DWG. NO. E C-150645 SHEET 1 of 1