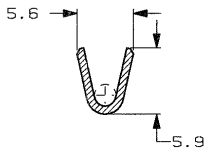


SCALA NON IMPEGNATIVA
(DO NOT SCALE)
DIMENSIONI IN
(DIMENSIONS IN) mm

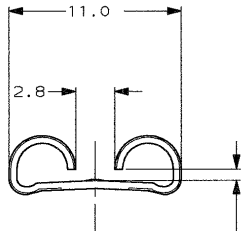
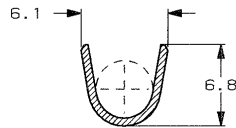
METRIC

PROIEZIONE EUROPEA
(EUROPEAN PROJECTION)

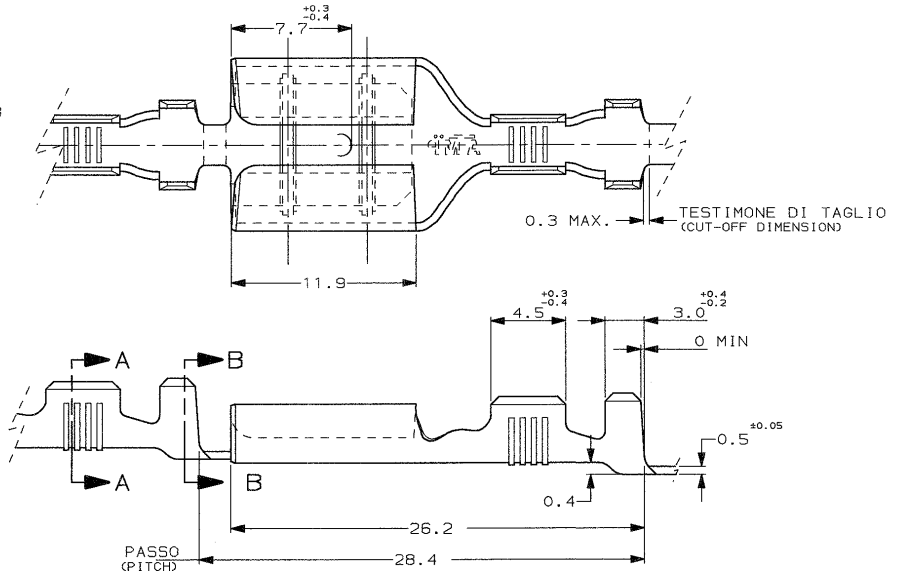
SEZIONE A-A
(SECTION A-A)



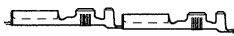
SEZIONE B-B
(SECTION B-B)



ADATTO PER LINGUETTA DI 1.2 mm
(TO FIT TAB 1.2 mm THK)



1) STATO DI FORNITURA - SCALA 1:1
(SUPPLY CONDITION - SCALE 1:1)



2) SPECIFICA DI PRODOTTO 108-20019
(PROD. SPEC. 108-20019).

3) BOBINATO CON FASCIATURA ESTERNA
(REELED WITH PAPER COVER)

4) OBSOLETE PARTS: OBSOLETE CIS STREAMLINING
PER D.RENAUD/D.SINISI

SENSO DI USCITA
DEL TERMINALE
DALLA BOBINA
(DIRECTION OFF
TOP OF REEL)



3	NUDO (UNPLATED)	OTTONE (BRASS)	5-160521-8	V
4	NUDO (UNPLATED)	BRONZO FOSF (PH. BRONZE)	5-160521-3	V
	STAGNATO (TIN PLATED)	OTTONE (BRASS)	5-160521-2	V
NOTES	FINITURA / COLORE (FINISH / COLOUR)	MATERIALE (MATERIAL)	NUMERO (AMP P/N)	REV.
CUSTOMER DWG. FOR REFERENCE ONLY		DISEGNO PER CLIENTE SOLO PER RIFERIMENTO		
THIS DRAWING IS UNPUBLISHED		RELEASE FOR PUBLICATION 19		
© COPYRIGHT 1978 BY AMP INCORPORATED, HARRISBURG, PA. ALL INTERNATIONAL RIGHTS RESERVED. AMP PRODUCTS MAY BE COVERED BY U.S. AND FOREIGN PATENT AND/OR PATENT PENDING.		TOLLERANZE, SE NON DIVERSAMENTE SPECIFICATE (TOLERANCES, UNLESS OTHERWISE SPECIFIED)		
± 0.3		DIAM. ISOLANTE (INS. DIA. RANGE)	RANGO FILO (WIRE RANGE) mm ²	SCALA (SCALE)
		4.0-6.0	3.8-5.1	4:1
ANSOL I (ANNULES) ± 2°		AMP AMP ITALIA S.p.A. Corso F.lli Cervi, 15 COLLENO (TORINO)		
V1	REVISED PER ECO-09-022178	DIS. R. FABRIS (R. 22 MAR 00)	DESCRIZIONE (DESCRIPTION) FASTON® Connector .375" sr. REC. CONTACT	
V	OBSOLETE P/N'S AND REDRAWN ET00-0305-89	CONT. C. TARTARI (C. 22 MAR 00)	LOC. SIZE NUMERO (LOC. NO)	FOLIO (SHEETS) V1 1 DI (OF) 1
REV. (REV.)	REVISIONI (REVISION RECORD)	DIS. DATA (DIS. DATE)	APP. (APP.)	

REVISIONI (REVISION RECORD)