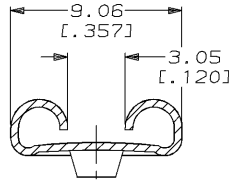
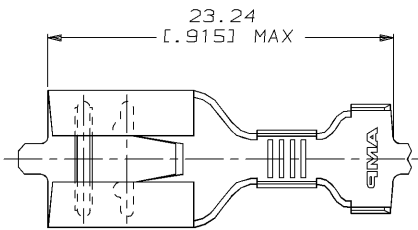


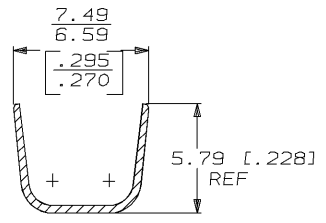
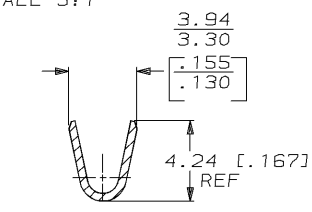
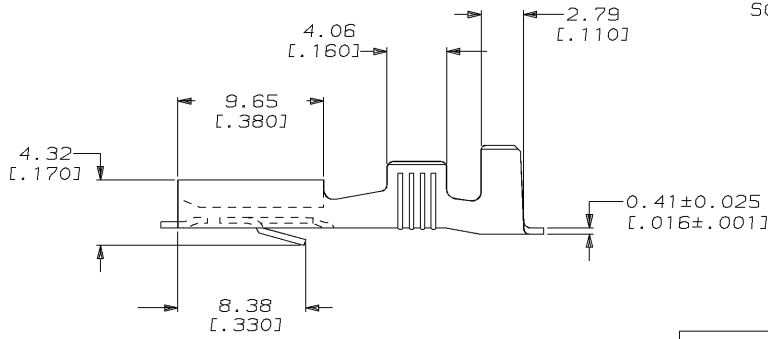
DRAWING MADE IN THIRD ANGLE PROJECTION

THIS DRAWING IS UNPUBLISHED. RELEASED FOR PUBLICATION, 1994
 © COPYRIGHT 1994 BY AMP INCORPORATED. ALL INTERNATIONAL RIGHTS RESERVED.

LOC	DIST	ZONE	LTR	DESCRIPTION	DATE	APPD
AF	50		A	REL-1 PER 0621-94	12/19/94	JR/JG



1 CONTINUOUS STRIP ON REELS.



4.06 MAX OR (2) 3.30 DIA [0.160 MAX OR (2) 0.130 MAX]	INSUL RANGE	WIRE SIZE	MATING TAB THK ±0.025 [0.001]	PART NO
DO NOT SCALE PRINT. UNLESS SPECIFIED DIMENSIONS IN mm (INCHES) TOLERANCES ON: 1 PLC DEC ± 0.38 (0.015) 2 PLC DEC ± - ANGLES ± -	4M BRASS	FINISH	AMP Incorporated Harrisburg, PA 17105-3608	63813-1
TIN 0.002032 [0.000080] MIN	DR 10/17/94 JR RUTH	CHK 10/17/94 NS FEHER	NAME RECEPTACLE, FASTIN-FASTON, 7.92 [0.312] SERIES	SIZE B
	APPD 10/17/94 J SILESPIE	APPD 10/17/94 R REINER	CAGE CODE 00779	DRAWING NO C=63813
	PRODUCT SPEC -	APPLICATION SPEC -	SCALE 4:1	SHEET 1 OF 1
	WEIGHT -			

THIS DRAWING IS A CONTROLLED DOCUMENT FOR AMP INCORPORATED. IT IS SUBJECT TO CHANGE AND THE CONTROLLING ENGINEERING ORGANIZATION SHOULD BE CONTACTED FOR THE LATEST REVISION.

AMP 1470-15 REV 3-92 19-DEC-94 10:10:02 amp13469 /files/dept2121/dwg2121/u.fastin-on/u.312-str

CUSTOMER DRAWING