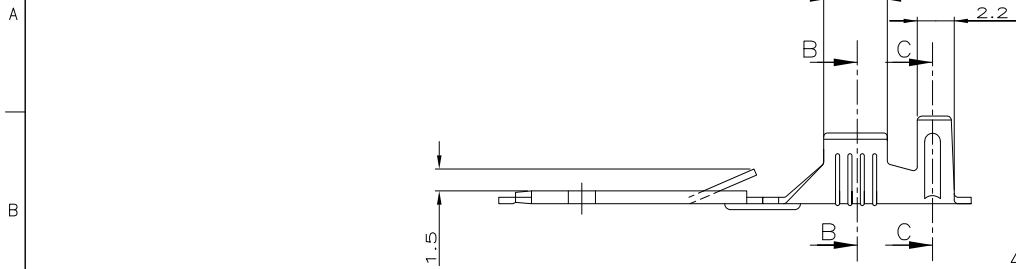


1 2 3 4 5 6 7 8

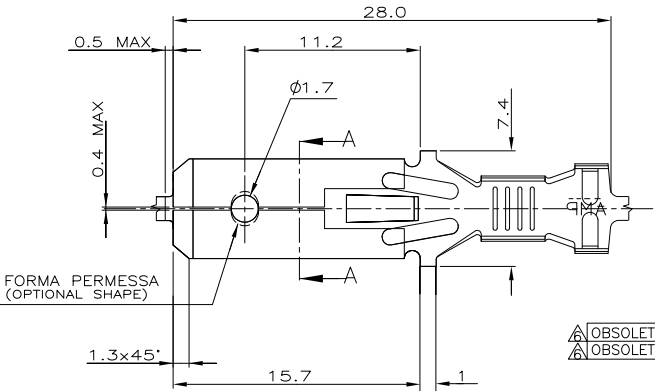
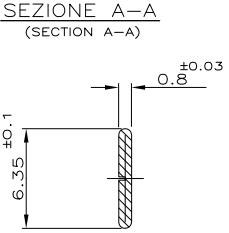
SCALA NON IMPEGNATIVA (DO NOT SCALE) METRIC PROIEZIONE EUROPEA (EUROPEAN PROJECTION)



1) STATO DI FORNITURA (SCALA 1:1) (SUPPLY CONDITION, Scale 1:1)

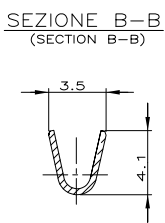
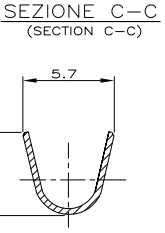
SENSO DI USCITA DEL TERMINALE DALLA BOBINA (DIRECTION OFF TOP OF REEL)

- 2) SPECIFICA DI PRODOTTO : 108-20020 (PRODUCT SPECIFICATION : 108-20020)
- 3 BOBINATO SU BOBINA 10" CON CARTA INTERPOSTA 1/2 (REELED ON 10" 1/2 CARTON TYPE REEL WITH INTERLEAVE PAPER STRIP)
 - 4 BOBINATO SU BOBINA 12" CON CARTA INTERPOSTA (REELED ON 12" CARTON TYPE REEL WITH INTERLEAVE PAPER STRIP)
 - 5 BOBINATO SU BOBINA 10" (REELED ON 10" 1/2 CARTON TYPE REEL)
 - 6 OBSOLETE PARTS: OBSOLETE CIS STREAMLINING PER D.RENAUD/D.SINISI



OBSOLETE

NOTE (NOTES)	FINITURA (FINISH)	MATERIALE (MATERIAL)	NUMERO (AMP P/N)	REV
4	PRE-STAGNATO (PRE-TIN PLATED)	OTTONE (BRASS)	1-280081-2	AA
3	NUDO (UNPLATED)	OTTONE (BRASS)	1-280081-1	Z
4	ARGENTATO (SILVER PLATED)	OTTONE (BRASS)	1-280081-0	Z
4	STAGNATO (TINPLATED)	OTTONE (BRASS)	280081-9	Z
4	NUDO (UNPLATED)	OTTONE (BRASS)	280081-8	Z
4	STAGNATO (TINPLATED)	BRONZO FOSF.(PH.BRONZE)	280081-7	Z
3	STAGNATO (TINPLATED)	OTTONE (BRASS)	280081-6	Z
4	STAGNATO (TINPLATED)	BRONZO FOSF.(PH.BRONZE)	280081-4	Z
4	NUDO (UNPLATED)	BRONZO FOSF.(PH.BRONZE)	280081-3	Z
4	STAGNATO (TINPLATED)	OTTONE (BRASS)	280081-2	Z
4	NUDO (UNPLATED)	OTTONE (BRASS)	280081-1	Z



CUSTOMER DWG. FOR REFERENCE ONLY		DISEGNO PER CLIENTE SOLO PER RIFERIMENTO	
THIS DRAWING IS UNPUBLISHED - RELEASE FOR PUBLICATION 2000			
© COPYRIGHT 19 BY AMP INCORPORATED, HARRISBURG, PA. ALL INTERNATIONAL RIGHT RESERVED. AMP PRODUCTS MAY BE COVERED BY U.S. AND FOREIGN PATENT AND/OR PATENT PENDING			
TOLLERANZE: SE NON DIVERSAMENTE SPECIFICATO (TOLERANCES: UNLESS OTHERWISE SPECIFIED)		DIAM. ISOLANTE (INS. DIA. RANGE)	RANGO FILO (WIRE RANGE)
± 0.3		Ø4 mm. MAX	0.8-2.5mm ²
ANGOLI (ANGLES)		SCALA (SCALE)	
± 2°		4:1	
DIS. 01-FEB-00 R.FABRIS		DESCRIZIONE (DESCRIPTION)	
CONT. (CHK) -		FASTIN-FASTON Conn...250"sr. TAB CONTACT	
REV. (REV) -		LOC. SIZE	NUMERO (DWG NO)
DATA (DATE)		1 A3	C-280081
APP. (APP) -		REV.	FOGLIO (SHEET)
DATA (DATE)		AA1	1 DI (OF) 1

DISTRIBUZIONE (PRINT DIST.)

AMP-ITA 7923 - 5/92 1 2 3 4 5 6 7 8