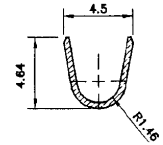
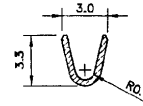
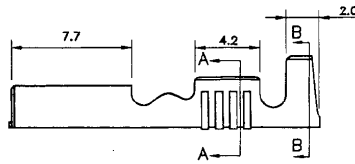
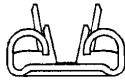
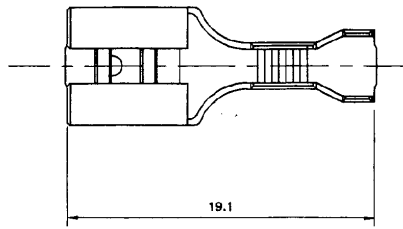
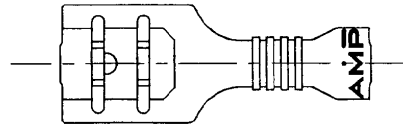


DRAWING MADE IN THIRD ANGLE PROJECTION



SECTION A-A

SECTION B-B



NOTE 1:
THE FIRST INSERTION SHALL NOT BE MORE THAN 55N
2:
ALL OTHER SPECIFICATIONS ARE IN COMPLIANCE TO AS3169.

CONTROLLED

WIRE RANGE: 0.5-1.5 sq mm		-		-		NICKEL SILVER		190670-2	
INSULATION RANGE: #2.29-3.3 mm		REMARKS		FINISH		MATERIAL		PART No	
		SIZE 0.4±0.013x19.3±0.05							
		DATE 20/04/94		CHK FP					
		DR RB		APP BL					
		NAME		RECEPTACLE, FASTON, 0.250				LOC CODE	
		B ECH FA 00 0003 85		BL 17/9/88				U	
		A ECH 64013		BL 20/4/94				REV	
P	F	LTR	REVISION RECORD	APP	DATE	SCALE	SIZE	DWG No.	SHEET
						4:1 or shown	A3	C-190670	1 OF 1

CUSTOMER DRAWING

ORIGINAL

THIS INFORMATION IS CONFIDENTIAL AND DISCLOSED TO YOU BY YOU TO OTHER THAN AMP PERSONNEL WITHOUT WRITTEN AUTHORIZATION FROM AUSTRALIAN AMP.

8

7

6

5

4

3

2

1

F
E
D
C
B
A