

4

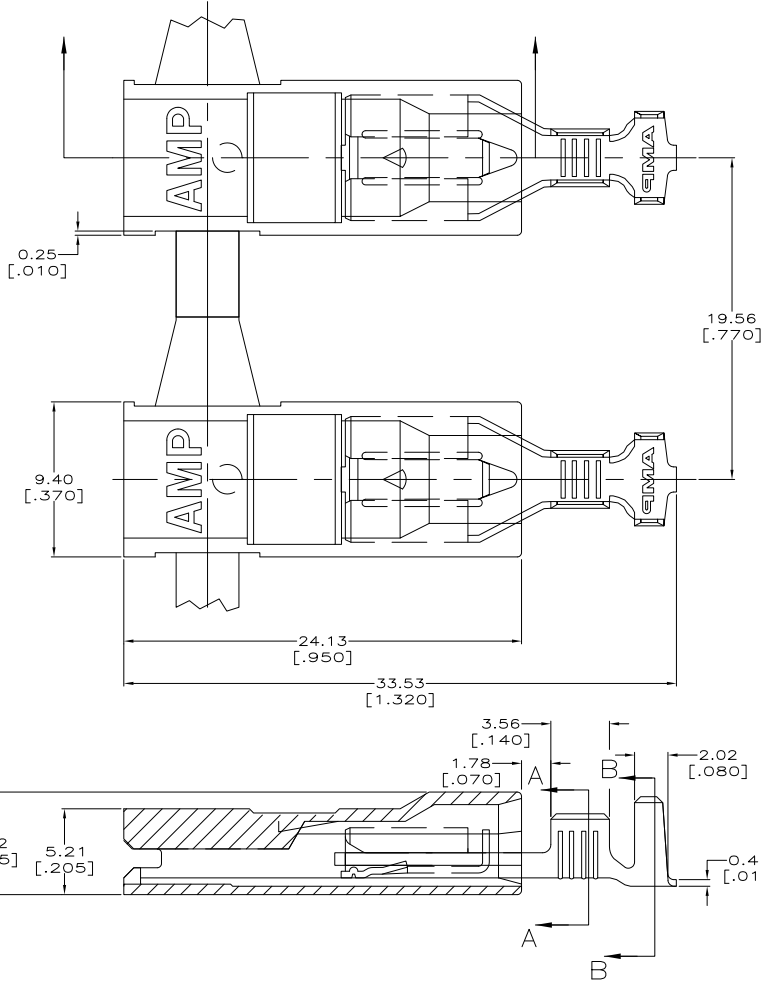
3

2

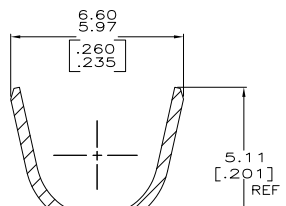
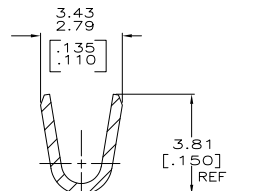
1

THIS DRAWING IS UNPUBLISHED. RELEASED FOR PUBLICATION.
 © COPYRIGHT BY TYCO ELECTRONICS CORPORATION. ALL INTERNATIONAL RIGHTS RESERVED.

LOC	DIST	REVISIONS					
AF	50	F	LR	DESCRIPTION	DATE	MIN	APD
		C		REVISED PER ECR-10-001444	22FEB10	HMR	GP



- 1 MATING TAB THK TO BE 0.81±0.025 [.032±.001]
- △ TIN PLATE 0.002032 [.000080] MIN THK.
- 3 WIRE SIZE IS [#18-#14] AWG.
- 4 INSULATION RANGE IS 2.79-4.57 [.110-.180] DIA.
 2.79-3.56 [.110-.140] DIA - CRIMP WIDTH 4.57 [.180], F TYPE
 3.56-4.57 [.140-.180] DIA - CRIMP WIDTH 4.57 [.180], O TYPE
- △ PRELIMINARY - NOT FOR PRODUCTION
- 6 OFFERED FOR CONSIDERATION IN APPLICATIONS REQUIRING "NON-DRIP" HOUSING MATERIAL.



VO NYLON 66, NATURAL (WHITE)	H04 BRASS, TIN PLATED H04 BRASS, PLAIN	△ 521863-2 521863-1
HOUSING MATERIAL		TERMINAL, MATERIAL & FINISH PART NO.

THIS DRAWING IS A CONTROLLED DOCUMENT.		DMR	JR_RUTH	2000T05	Tyco Electronics Corporation Harrisburg, PA 17105-3608	
DIMENSIONS: mm [INCHES]		CHK	G	2000T05	ASSEMBLY, RECEPTACLE, ULTRA-POD, 6.35 [.250] SERIES	
TOLERANCES UNLESS OTHERWISE SPECIFIED:		APP'D	G_PORTIA	2000T05	NAME	RESTRICTED TO
0 PLG	± .005	PRODUCT SPEC			APPLICATION SPEC	SIZE
1 PLG	± .005				WEIGHT	ONE CODE
2 PLG	± 0.25 (.010)					DRAWING NO
3 PLG	± .005					A200779
4 PLG	± .005					C=521863
ANGLES	± .005					SCALE
MATERIAL	SEE TABLE	FINISH	SEE TABLE	CUSTOMER DRAWING	SCALE	6:1
					SHEET	1 of 1
					REV	C

1471-9 (1/08)

521863

A