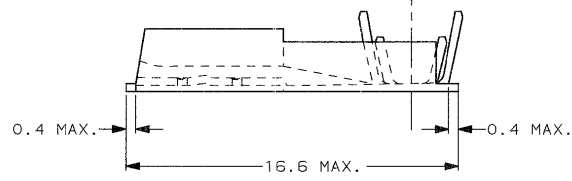
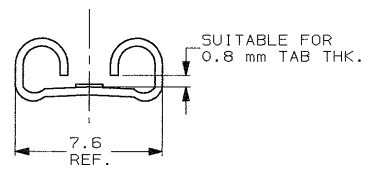
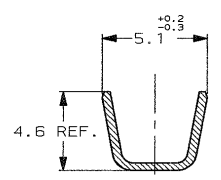
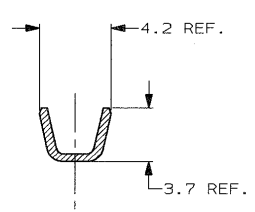


- 1) PER LA VERSIONE IN NASTRO  
VEDERE DISEGNO 180397.  
(FOR STRIP FORM VERSION SEE DRAWING 180397).
- 2) CONFEZIONAMENTO IN ACCORDO  
ALLA SPECIFICA AMP 107-20201.  
(PACKAGE ACCORDING TO AMP SPEC. 107-20201).



SECTION A-A

SECTION B-B



STAGNATO (TIN PLATED)	BRONZO FOSF. (PHOS. BRONZE)	0-180429-5	K
STAGNATO (TIN PLATED)	OTTONE (BRASS)	0-180429-2	K
NUDO (UNPLATED)	OTTONE (BRASS)	0-180429-1	K
FINITURA / COLORE (FINISH / COLOUR)	MATERIALE (MATERIAL)	NUMERO (AMP P/N)	REV

CUSTOMER DWG. FOR REFERENCE ONLY

DISEGNO PER CLIENTE SOLO PER RIFERIMENTO

THIS DRAWING IS UNPUBLISHED		RELEASE FOR PUBLICATION		19
© COPYRIGHT 19 BY AMP INCORPORATED, HARRISBURG, PA. ALL INTERNATIONAL RIGHT RESERVED. AMP PRODUCTS MAY BE COVERED BY U.S. AND FOREIGN PATENT AND/OR PATENT PENDING.				
TOLLERANZE SE NON DIVERSAMENTE SPECIFICATO (TOLERANCES, UNLESS OTHERWISE SPECIFIED)	DIAM. ISOLANTE (INS. DIA. RANGE)	RANGO FILO (WIRE RANGE)	SCALA (SCALE)	
± 0.3	2.5-3.8	1.0-2.5	5:1	
ANGOLI (ANGLES)	± 2°			

DIS. 21 JUN 2001 (DR.)	H. YAALI	DESCRIZIONE (DESCRIPTION)	FASTON® Connector .250" FLAG REC. CONTACT (LOOSE PIECE VERSION)
CONT. 21 JUN 2001 (CHK.)	C. TARTARI	LOC. SIZE	NUMERO (DWG NO)
REV. K		I A3	C-180429
OBSOLETE PARTS & REDRAWN (REVISION RECORD)		REV.	FOLGIO (SHEET)
			1 DI 1

PRINTED ON RECYCLED PAPER