

4

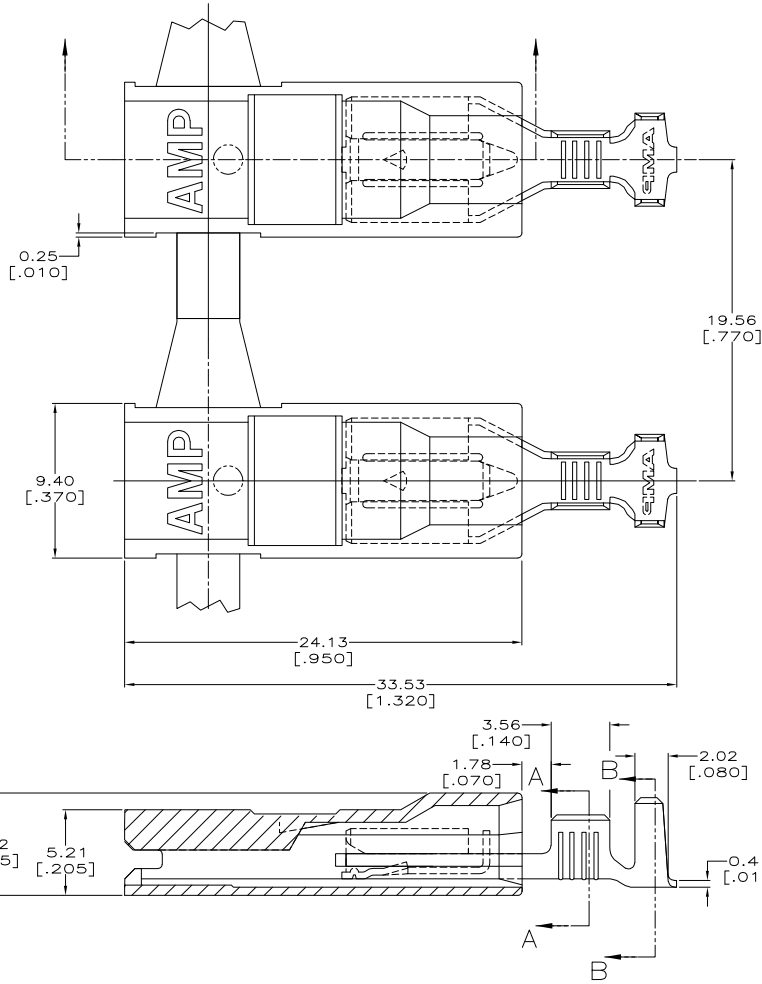
3

2

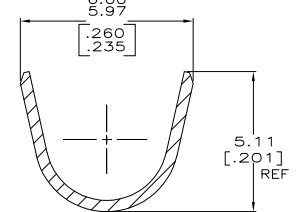
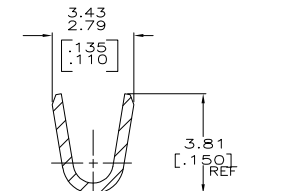
1

THIS DRAWING IS UNPUBLISHED. RELEASED FOR PUBLICATION
 © COPYRIGHT 19 BY AMP INCORPORATED. ALL RIGHTS RESERVED.

LOC		DIST		REVISIONS			
F	LR	DESCRIPTION	DATE	BY	APPD		
AF	50						
	A2	REV PER ECR 05-013671	21OCT05	JR	GP		



- 1 MATING TAB THK TO BE 0.81 ± 0.025 [$.032 \pm .001$].
- 2 TIN PLATE 0.002032 [$.000080$] MIN THK.
- 3 WIRE SIZE IS [#18-#14] AWG.
- 4 INSULATION RANGE IS $2.79-4.57$ [$.110-.180$] DIA.
 $2.79-3.56$ [$.110-.140$] DIA - CRIMP WIDTH 4.57 [$.180$], F TYPE
 $3.56-4.57$ [$.140-.180$] DIA - CRIMP WIDTH 4.57 [$.180$], O TYPE



TIN	521317-2		
-	521317-1		
FINISH	PART NO.		
AMP			
AMP Incorporated Harrisburg, PA 17105-3608			
ASSEMBLY, RECEPTACLE, ULTRA-POD, 6.35 [.250] SERIES			
SIZE	CAGE CODE	DRAWING NO.	RESTRICTED TO
-	A200779	521317	-
CUSTOMER DRAWING	SCALE	SHEET	REV
	5:1	1 OF 1	A2

THIS DRAWING IS A CONTROLLED DOCUMENT.	
DESIGNED BY J.R. RUTH	DATE 12/10/00
CHECKED BY M.S. FEHER	DATE 12/10/00
APPROVED BY J. BLUMMEL	DATE 12/10/00
APPLICATION SPEC: -	
MATERIAL: - H04 BRASS	
TERMINAL: - SEE TABLE	
HOUSING: - 6/8 W/ NYLON	
FINISH: - NATURAL	

AMP 1471-9 REV 11/28/97
 Formatted 02/03/00 09:46:48 (Y:\AMPCOM\DESIGN\3179)
 Computerized, Inc. - Medium Revision 12/10/00

521317

A