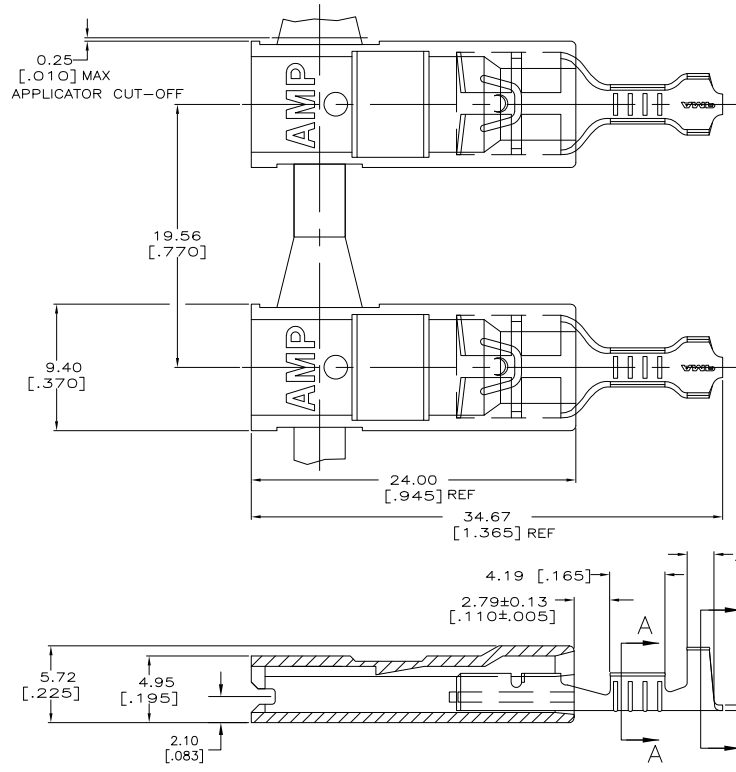
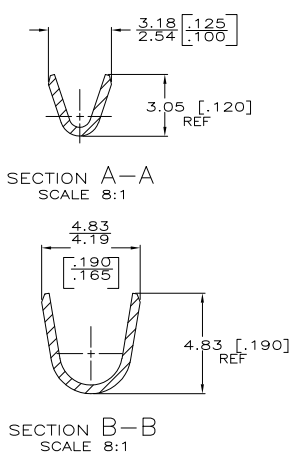


THIS DRAWING IS UNPUBLISHED. RELEASED FOR PUBLICATION BY TYCO ELECTRONICS CORPORATION. ALL RIGHTS RESERVED.

LOC	QTY	REV	DESCRIPTION	DATE	BY	APP
AF	50	A1	REVISED PER ECR-06-000467	24MAY06	HMR	GP



△ 0.002032 [.000080] MIN TIN
 2 LOW-INSERTION FASTON TERMINALS, BASE PART NUMBER 63609, ARE USED IN THIS PRODUCT.



TERMINAL FINISH	INSULATION RANGE	WIRE SIZE	MATING TAB THK	PART NO
PLAIN	2.29-3.30 [.090-.130]	0.3-0.8 mm ² [22-18]	0.81 [.032]	521368-2
			±0.02S [±.001]	521368-1

THIS DRAWING IS A CONTROLLED DOCUMENT.		DATE	BY	APPROVED
		15JAN01	RUTH	
		15JAN01	FEHER	
		15JAN01	HUMMEL	
DIMENSIONS: TO DIMENSIONS UNLESS OTHERWISE SPECIFIED:		108-1285	ASSEMBLY, HOUSING & RECEPTACLE, 6.35 [.250] SERIES ULTRA-POD	
MATERIAL: TERMINAL - #44 HARD BRASS HOUSING - 6/6 50 1050N		114-2124	SIZE	Q00779
TERMINAL - SEE TABLE HOUSING - NATURAL		WEIGHT	00779	521368
CUSTOMER DRAWING		SCALE	5:1	SHEET 1 of 1

AMP 1471-B REV 31MMR2000

521368

A