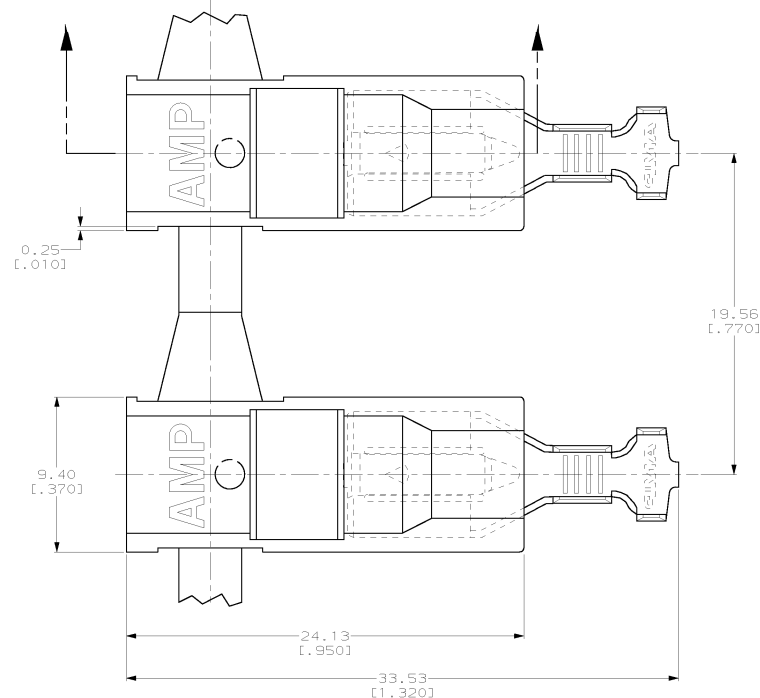
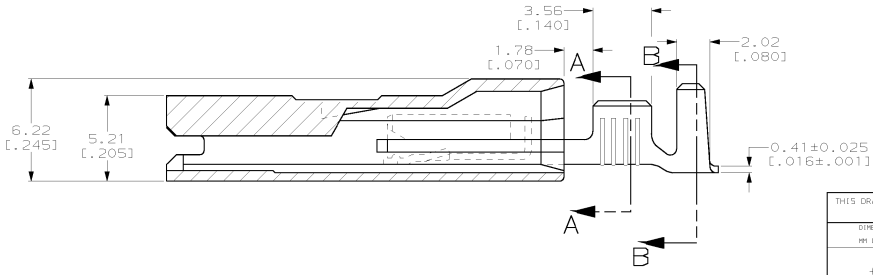
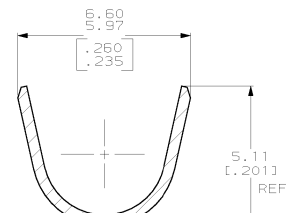
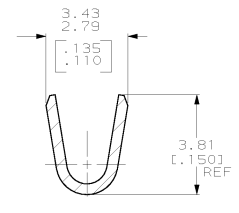


THIS DRAWING IS UNPUBLISHED. RELEASED FOR PUBLICATION
 (C) COPYRIGHT IS BY AMP INCORPORATED. ALL RIGHTS RESERVED.

REVOLUTIONS		DATE	BY	APP'D
LOC	QTY			
AF	50			
F	CLB			
F	REV PER	063A-0412-01	13.JUL.01	JR JH



- 1 MATING TAB THK TO BE 0.81±0.025 [.032±.001].
 - 2 TIN PLATE 0.002032 [.000080] MIN THK.
 - 3 WIRE SIZE IS [#18-#14] AWG.
 - 4 INSULATION RANGE IS 2.79-4.57 [.110-.180] DIA.
 2.79-3.56 [.110-.140] DIA - CRIMP WIDTH 4.57 [.180], F TYPE
 3.56-4.57 [.140-.180] DIA - CRIMP WIDTH 4.57 [.180], O TYPE
- ⚠ PRELIMINARY - NOT FOR PRODUCTION



RED	△ TIN	△ 521213-4
BLUE	△ TIN	△ 521213-3
NATURAL	△ TIN	△ 521213-2
NATURAL	-	521213-1
COLOR	FINISH	PART NO.

THIS DRAWING IS A CONTROLLED DOCUMENT. **AMP** AMP Incorporated Harrisburg, PA 17105-3608

ASSEMBLY, RECEPTACLE, ULTRA-POD, 6.35 [.250] SERIES

DATE CASE CODE DRAWING NO. RESTRICTED TO
 A2 00773 C- 521213

CUSTOMER DRAWING SCALE 5:1 SHEET 1 OF 1 REV F