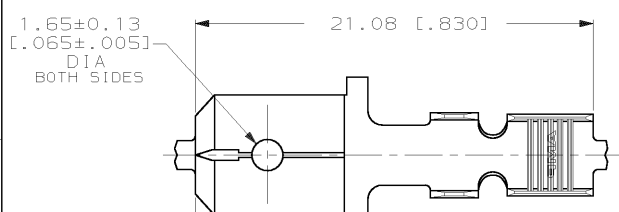
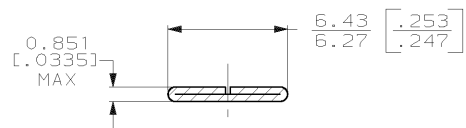


THIS DRAWING IS UNPUBLISHED. RELEASED FOR PUBLICATION  
 © COPYRIGHT 19 BY AMP INCORPORATED. ALL INTERNATIONAL RIGHTS RESERVED.

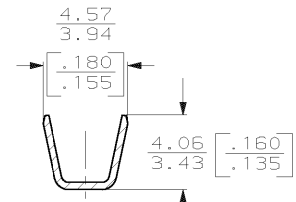
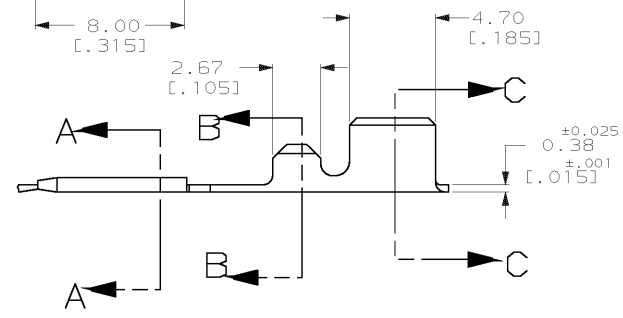
LOC	DIST	ZONE	LTR	REV PER	DESCRIPTION	DATE	APPD
AF	50			C	REV PER 063A-0146-99	9/9/99	JR/PD



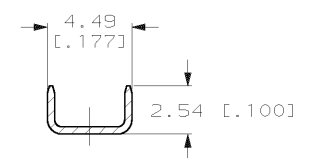
1 CONTINUOUS STRIP ON REELS.  
 2 TIN PLATE 0.002032 [.000080] WITH VARNISH RESIST.



SECTION A-A



SECTION B-B



SECTION C-C

[14-12 (2) #16]	63657-1
WIRE SIZE	PART NO

DO NOT SCALE PRINT. UNLESS SPECIFIED DIMENSIONS IN MM [INCHES] TOLERANCES ON: 2 PLC DEC ± 0.25 (.010) 3 PLC DEC ± - ANGLES ± -	DR B/11/92 JR RUTH CHK B/11/92 MS FEHER APPD B/11/92 C HENERS APPD B/11/92 D REINER
MATERIAL 082 BRASS	PRODUCT SPEC -
FINISH 2	APPLICATION SPEC -
	WEIGHT -

<b>AMP</b> AMP Incorporated Harrisburg, PA 17105-3608	
NAME TAB, AMPLIVAR, 6.35 [.250] SERIES	
SIZE B	CAGE CODE 00779
DRAWING NO C=63657	SHEET 1 OF 1
SCALE 5:1	

THIS DRAWING IS A CONTROLLED DOCUMENT FOR AMP INCORPORATED. IT IS SUBJECT TO CHANGE AND THE CONTROLLING ENGINEERING ORGANIZATION SHOULD BE CONTACTED FOR THE LATEST REVISION.