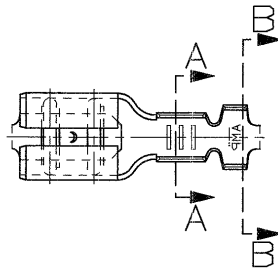


SCALA NON IMPEGNATIVA
(DO NOT SCALE)
DIMENSIONI IN
(DIMENSIONS IN) mm

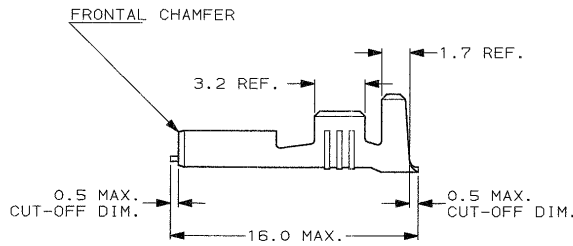
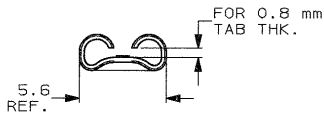
METRIC

THIRD ANGLE
PROJECTION

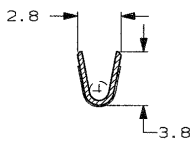


- 1) PER PEZZI IN NASTRO
VEDERE DISEGNO 160429
(FOR STRIP VERSION
SEE DWG. 160429).
- 2) CONFEZIONATO IN ACCORDO ALLA
SPECIFICA AMP 107-20201.
(PACKAGED ACCORDING TO AMP SPEC. 107-20201).

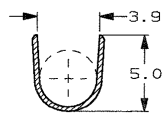
⚠️ OBSOLETE PARTS: OBSOLETE CIS STREAMLINING PER D.RENAUD/D.SINISI



SEZIONE A-A
(SECTION A-A)



SEZIONE B-B
(SECTION B-B)



⚠️ OBSOLETE

STAGNATO (TIN PLATED)	BRONZO FOS. (PHOS. BRONZE)	5-160491-6	K-
PRE NICHELATO (PRE-NICKEL PL.)	ACCIAIO (STEEL)	5-160491-4	K-
STAGNATO (TIN PLATED)	OTTONE (BRASS)	5-160491-2	K-
NUDO (PLAIN)	OTTONE (BRASS)	5-160491-1	K-
FINITURA / COLORE (FINISH / COLOUR)	MATERIALE (MATERIAL)	NUMERO (AMP P/N)	REV

CUSTOMER DWG. FOR REFERENCE ONLY DISEGNO PER CLIENTE SOLO PER RIFERIMENTO

THIS DRAWING IS UNPUBLISHED	RELEASE FOR PUBLICATION	19
© COPYRIGHT IS RESERVED. AMP PRODUCTS MAY BE COVERED BY U.S. AND FOREIGN PATENT AND/OR PATENT PENDING	BY AMP INCORPORATED, HARRISBURG, PA.	ALL INTERNATIONAL RIGHTS RESERVED.
TOLLERANZE, SE NON DIVERSAMENTE SPECIFICATE (TOLERANCES, UNLESS OTHERWISE SPECIFIED)	DIAM. ISOLANTE (INS. DIA. RANGE)	RANGO FILO (WIRE RANGE)
± 0.3	3.0-4.0	1.0-2.5
ANGOLI (ANGLED)	± 0.3°	SCALA (SCALE)
		4:1

AMP AMP ITALIA S.p.A.
Corso F.lli Cervi, 15
COLLENO (TORINO)

K1	REVISED PER ECO-09-022178	KK	24 SEP 09	DESCRIZIONE (DESCRIPTION)	FASTON® Connector, .187 sr. REC. CONTACT LOOSE PIECE VERSION	LOC. SIZE	NUMERO (DWG NO)	REV.	FOLIO (SHEET)
K	FIRST EMISSION ET00-0138-01	H. YAALI	DIS. 02 NOV 2000 (DR.)			I	A3	C-160491	K1
K	REVISIONI (REVISION RECORD)	C. TARTARI	CONF. 02 NOV 2000 (CHK)						1
									DI (COP) 1

DISTRIBUZIONI (PRINT DISTR.)

AMP-174 9033 - 6/00