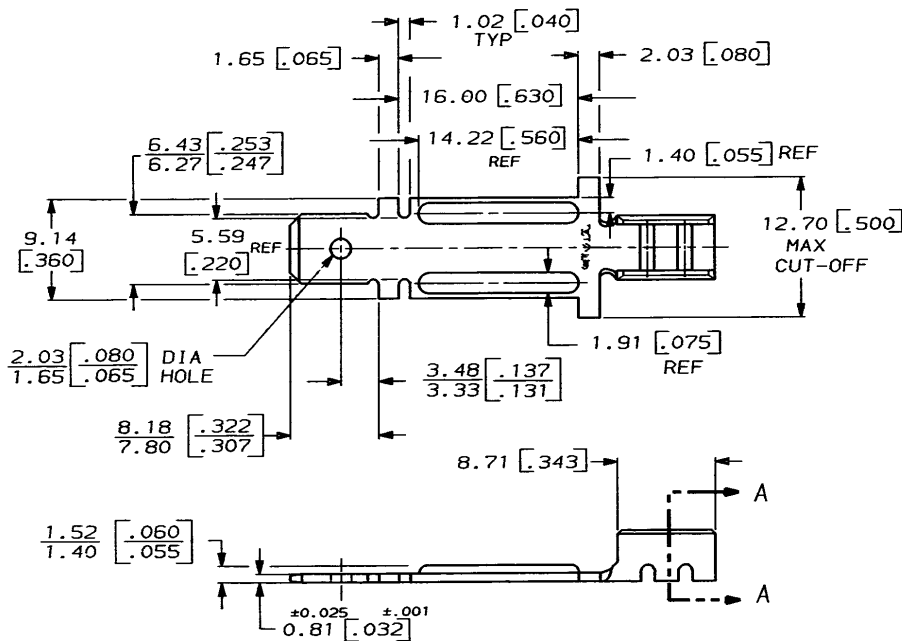


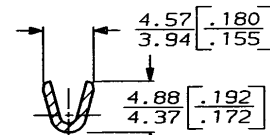
DRAWING MADE IN THIRD ANGLE PROJECTION

THIS DRAWING IS UNPUBLISHED. RELEASED FOR PUBLICATION  
 © COPYRIGHT 19 BY AMP INCORPORATED, HARRISBURG, PA. ALL INTERNATIONAL RIGHTS RESERVED. AMP PRODUCTS MAY BE COVERED BY U.S. AND FOREIGN PATENTS AND/OR PATENTS PENDING.

LOC	DIST	P	F	ZONE	LTR	DESCRIPTION	DATE	APPROVED
AF	50				A	RELEASED	4/7/88	<i>[Signature]</i>



1- DIMENSIONS IN BRACKETS ARE IN INCHES.  
 2- CONTINUOUS STRIP ON REELS.



SECTION A-A

[20-15] 0.81-1.45 MM DIA		63522-1
WIRE SIZE		PART NO
<b>AMP</b> AMP INCORPORATED Harrisburg, Pa. 17105		
UNLESS OTHERWISE SPECIFIED TOLERANCES ON: 2 PL DEC ± 3 PL DEC ± 0.25 [010] ANGLES ±		DR JR RUTH 11/22/88 CHK M FEHER 11/23/88 APPD J GILLESPIE 11/28/88 APPD R KUZO 12/5/88
MATERIAL CRS TEMP 2		NAME TAB, NI-CHROME WIRE, .250 SERIES
FINISH NICKEL .000100 MIN		SIZE B FSCH NO 00779 DRAWING NO 63522
APPLICATION SPEC 114-2097 WEIGHT		SCALE 4:1 SHEET 1 OF 2

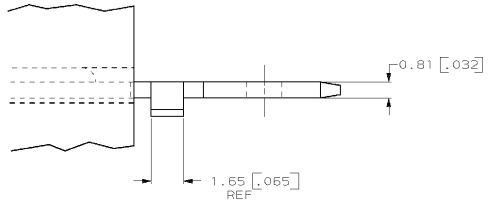
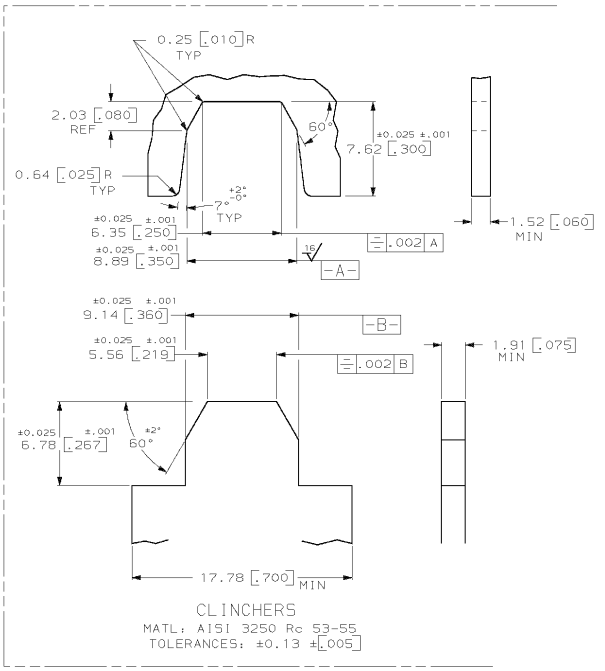
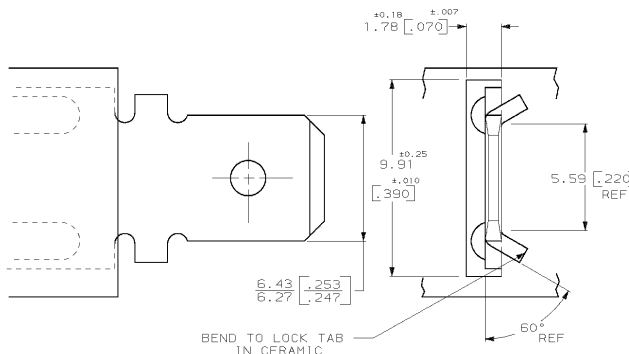
**METRIC**

CUSTOMER DRAWING

DRAWING MADE IN THIRD ANGLE PROJECTION

THIS DRAWING IS UNPUBLISHED. RELEASED FOR PUBLICATION .19  
 © COPYRIGHT 19 BY AMP INCORPORATED, HARRISBURG, PA. ALL INTERNATIONAL RIGHTS RESERVED. AMP PRODUCTS MAY BE COVERED BY U.S. AND FOREIGN PATENTS AND/OR PATENTS PENDING.

LOC		DST		REVISONS		DATE	APPROVED
AF	50	P	F	ZONE	LTR	DESCRIPTION	
				A		RELEASED	4/2/88



CLINCHERS  
 MATL: AISI 3250 Rc 53-55  
 TOLERANCES: ±0.13 ±[005]

SHEET 2 OF 2  
 63522

**METRIC**

UNLESS OTHERWISE SPECIFIED DIMENSIONS ARE IN MILLIMETERS		DR 11/22/88		AMP INCORPORATED	
TOLERANCES ON:		JR RUT		Harrisburg, Pa. 17105	
2 PL DEC ±		CHK 11/23/88		NAME TAB, NI-CHROME WIRE, .250 SERIES	
3 PL DEC ± 0.38 [015]		M FEHER			
ANGLES ±		APPD 11/26/88		SIZE FSCM NO DRAWING NO 00779 63522	
		J GILLESPIE			
MATERIAL	CRS	APPD 12/5/88		SCALE 8:1 SHEET 2 OF 2	
	TEMP 2	R KUZO			
FINISH	NICKEL	PRODUCT SPEC		APPLICATION SPEC 114-2097	
	.000100 MIN	WEIGHT			

AMP 1471-7 REV 10-84

CUSTOMER DRAWING