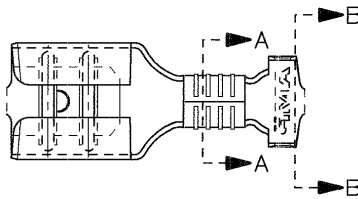
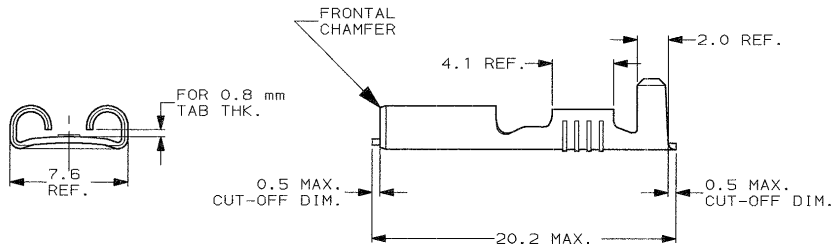


SCALA NON IMPEGNATIVA
(DO NOT SCALE)
DIMENSIONI IN
(DIMENSIONS IN) mm

METRIC



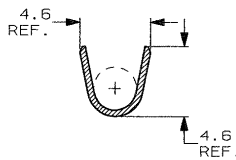
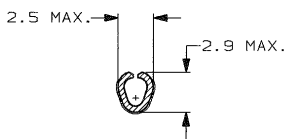
- 1) PER LE VERSIONI IN NASTRO
VEDERE DISEGNO 160432.
(FOR STRIP VERSION SEE DWG. 160432).
- 2) CONFEZIONATO IN ACCORDO ALLA
SPECIFICA AMP 107-20201.
(PACKAGED ACCORDING TO AMP SPEC. 107-20201).



SEZIONE A-A
(SECTION A-A)

SEZIONE B-B
(SECTION B-B)

INSULATION BARREL
NO PREFORMING REQUIRED



STAGNATO (TIN PLATED)	BRONZO FOS. (PHOS. BRONZE)	5-160506-8	J
NUDO (UNPLATED)	BRONZO FOS. (PHOS. BRONZE)	5-160506-7	J
ARGENTATO (SILVER PLATED)	OTTONE (BRASS)	5-160506-5	J
PRE NICHELATO (PRE-NICKEL PL.)	ACCIAIO (STEEL)	5-160506-3	J
STAGNATO (TIN PLATED)	OTTONE (BRASS)	5-160506-2	J
NUDO (UNPLATED)	OTTONE (BRASS)	5-160506-1	J
FINITURA / COLORE (FINISH / COLOUR)	MATERIALE (MATERIAL)	NUMERO (AMP P/N)	REV

CUSTOMER DWG. FOR REFERENCE ONLY **DISEGNO PER CLIENTE SOLO PER RIFERIMENTO**

THIS DRAWING IS UNPUBLISHED		RELEASE FOR PUBLICATION		19
© COPYRIGHT 19 BY AMP INCORPORATED, HARRISBURG, PA. ALL INTERNATIONAL RIGHT RESERVED. AMP PRODUCTS MAY BE COVERED BY U.S. AND FOREIGN PATENT AND/OR PATENT PENDING.				
TOLLERANZE, SE NON DIVERSAMENTE SPECIFICATO	DIAM. ISOLANTE (INS. DIA. RANGE)	RANGO FILLO (WIRE RANGE)	SCALA (SCALE)	
(TOLERANCES, UNLESS OTHERWISE SPECIFIED)	2.3-3.3	0.5-1.5	4:1	
ANGOLI (ANGLES)	± 0.3		± 2°	
DIS. H. YAALI (DR.)	17 OCT 2000		DESCRIZIONE (DESCRIPTION)	
CONF. C. TARTARI (CHK)	17 OCT 2000		FASTON® Connector, .250" SP. REC. CONTACT (LOOSE PIECE VERSION)	
J OBSOLETE PARTS & REDRAWN ETCG-0151-01	LOC.	SIZE	NUMERO (DWG NO)	REV.
REV. REVISIONI REVISION RECORD	I	A3	C-160506	J 1
DIS. (DR)	DATA (DATE)	APP. (APP.)	FOGLIO (SHEET)	
			1 DI (OF) 1	

CUTTING PLANE