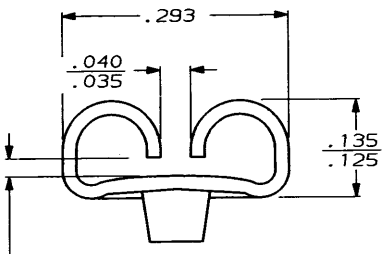
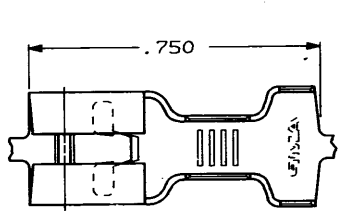


DRAWING MADE IN THIRD ANGLE PROJECTION

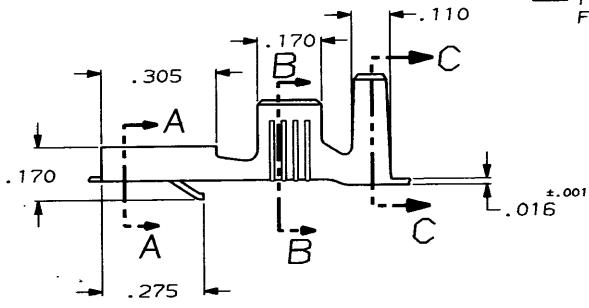
THIS DRAWING IS UNPUBLISHED. RELEASED FOR PUBLICATION

© COPYRIGHT 19 BY AMP INCORPORATED, HARRISBURG, PA. ALL INTERNATIONAL RIGHTS RESERVED. AMP PRODUCTS MAY BE COVERED BY U.S. AND FOREIGN PATENTS AND/OR PATENTS PENDING.

| LOC | | DIST | | REVISTONS | | | | DATE | APPROVED |
|-----|----|------|---|-----------|-----|------------------------|---------|-------------|----------|
| AF | 50 | P | F | ZONE | LTR | DESCRIPTION | 7/27/87 | [Signature] | |
| | | L | | A | | RELEASED & REV AF-4895 | | | |

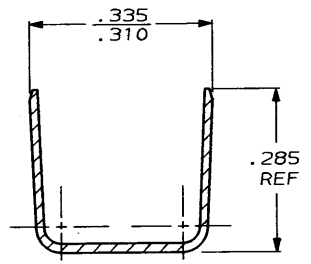
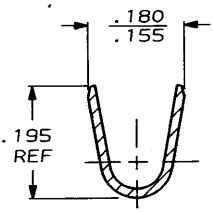


1 CONTINUOUS STRIP ON REELS.



FITS .250 SERIES FASTON TAB

SECTION A-A



SECTION B-B

SECTION C-C

| | | | |
|---|--------------------------|---|---------|
| | .140 (2) MAX | 14-10 OR 2 #14 | 63467-1 |
| | INSULATION RANGE | WIRE SIZE | PART NO |
| UNLESS OTHERWISE SPECIFIED DIMENSIONS ARE IN INCHES | DR JR RUTH 5/7/87 | AMP INCORPORATED Harrisburg, Pa. 17105 | |
| TOLERANCES ON: | CHK G YETTER 5/13/87 | | |
| 2 PL DEC ± . | APPD J GILLESPIE 5/13/87 | NAME RECEPTACLE, FASTIN-FASTON, .250 SERIES | |
| 3 PL DEC ± .010 | APPD R KUZO 5/14/87 | | |
| ANGLES ± . | PRODUCT SPEC - | SIZE | FSCM NO |
| MATERIAL | APPLICATION SPEC - | B. | 00779 |
| #4H BRASS | WEIGHT - | SCALE | NTS |
| FINISH | | DRAWING NO | 63467 |
| TIN | | SHEET | 1 OF 1 |

CUSTOMER DRAWING