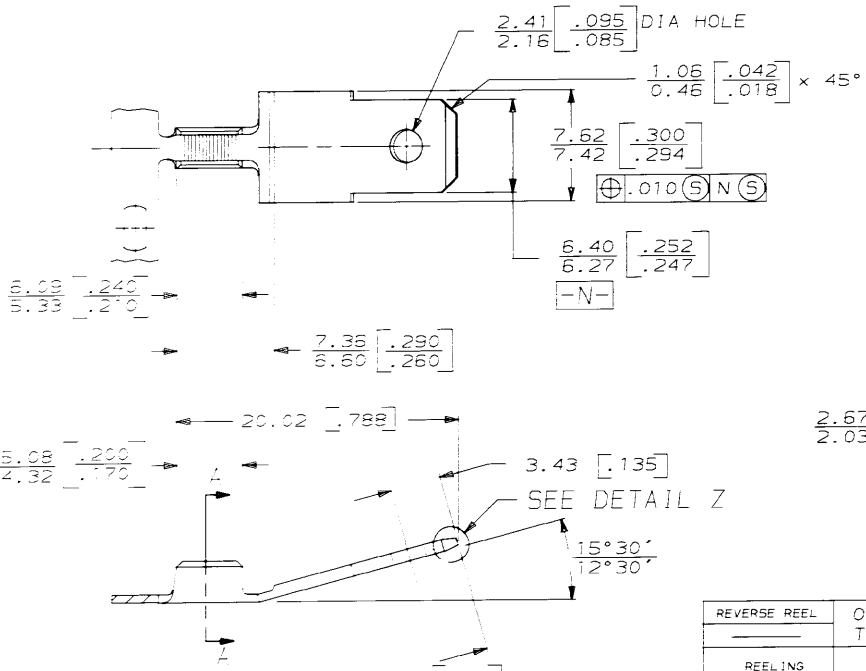
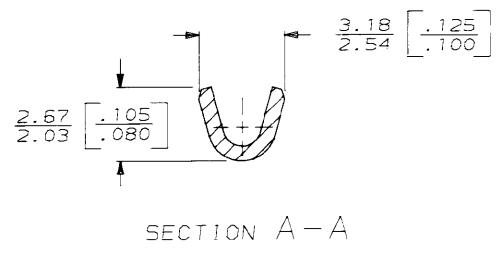
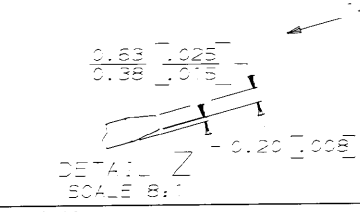


4
DRAWING MADE IN THIRD ANGLE PROJECTION
THIS DRAWING IS UNPUBLISHED. RELEASED FOR PUBLICATION _____, 19____
© COPYRIGHT 19____ BY AMP INCORPORATED, HARRISBURG, PA. ALL INTERNATIONAL RIGHTS RESERVED. AMP PRODUCTS MAY BE COVERED BY U. S. AND FOREIGN PATENTS AND/OR PATENTS PENDING.

| LCC | DIST | REVISIONS | | | | | DATE | APPROVED |
|-----|------|-----------|---|------|-----|-----------------|-------|----------|
| AF | 50 | P | F | ZONE | LTR | DESCRIPTION | | |
| | | | | M | | REVISED AF-7561 | JR/RB | |



1- DIMENSIONS IN BRACKETS ARE IN INCHES.
2- CONTINUOUS STRIP ON REELS.



METRIC

| | | | | |
|---|--|---|------------------|----------------------------|
| REVERSE REEL | 0.81 ±0.025 [0.032] ±.001 TO 0.51 ±0.025 [0.020] ±.001 | PRE-MILLED | 0.91-0.57 MM DIA | 63165-2 [19-23] 63165-1 |
| REELING | MATERIAL | | WIRE BARREL | PART NO |
| UNLESS OTHERWISE SPECIFIED DIMENSIONS ARE IN INCHES TOLERANCES ON: 2 PL DEC ± _____ 3 PL DEC ± .010 ANGLES ± _____ | DR JR RUTH 3-21-86 CHK G YETTER 3-21-86 APPD C MEYERS 3-21-86 APPD R KUZO 3-21-86 | AMP INCORPORATED Harrisburg, Pa. 17105 | | |
| MATERIAL BRASS | PRODUCT SPEC _____ | NAME .250 FASTON AMPLIVAR TAB | | |
| FINISH TIN | APPLICATION SPEC _____ | SIZE B | FSCM NO 00779 | DRAWING NO 63165 |
| WEIGHT _____ | SCALE NTS | SHEET 1 OF 1 | | |

CUSTOMER DRAWING

AMP 1490-115 REV 10-84
38 AUG 1981 17 47 24 AMP 3863 45784297223062734745