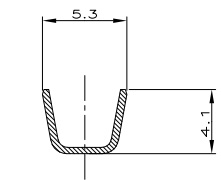
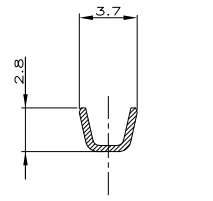
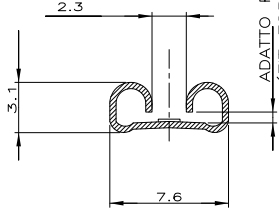
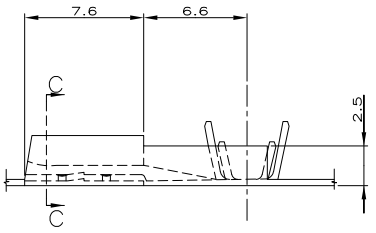
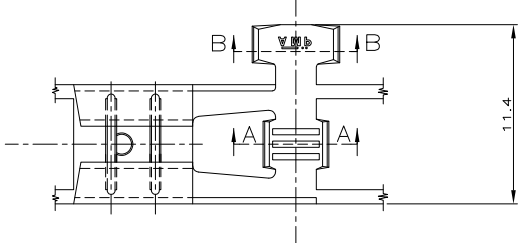


1 2 3 4 5 6 7 8

SCALA NON IMPEGNATIVA (DO NOT SCALE)
 DIMENSIONI IN METRI (DIMENSIONS IN INCH)
METRIC
 PROIEZIONE EUROPEA (EUROPEAN PROJECTION)



ADATTO PER LINGUETTA SPES. 0.8 (FIT FOR TAB THK 0.8)

- △ NON DISPONIBILE DALL' AMP ITALIA (NOT AVAILABLE FROM AMP ITALY)
- △ ADATTO PER AMP-O-MATOR (REVERSE REELED FOR MINI APPLICATOR)
- △ BOBINA IN CARTONE CON CARTA INTERPOSTA QUANTITA' PER BOBINA: 3000 (CARTON REEL WITH INTERPOSED PAPER STRIP Q.TY PER REEL: 3000)
- △ CON SPECIALE RIVESTIMENTO IN CARTA (WITH SPECIAL PAPER COVER)
- △ BOBINA IN CARTONE CON CARTA INTERPOSTA QUANTITA' PER BOBINA: 2500 (CARTON REEL WITH INTERPOSED PAPER STRIP Q.TY PER REEL: 2500)
- △ OBSOLETE
- △ BOBINA IN CARTONE QUANTITA' PER BOBINA: 7000 (CARTON REEL Q.TY PER REEL: 7000)
- △ OBSOLETE PARTS: OBSOLETE CIS STREAMLINING PER D.RENAUD/D.SINISI

OB	Q	M	FINITURA	MATERIALE	NUMERO	REV
(FINISH)	(MATERIAL)	(P/N)				
△	6	ST. (TIN PLTD)	BR. F. (PH. BR.)	4-280050-7	BC	
△		(UNPLTD)	BR. F. (PH. BR.)	4-280050-4	BC	
△		(UNPLTD)	OTTONE (BRASS)	4-280050-2	BC	
△		(UNPLTD)	OTTONE (BRASS)	4-280050-1	BC	
△		(UNPLTD)	BR. F. (PH. BR.)	2-280050-4	BB	
△		(NICKEL PLTD)	ACCIAIO (STEEL)	2-280050-3	BB	
△		(UNPLTD)	OTTONE (BRASS)	2-280050-2	BB	
△		(UNPLTD)	OTTONE (BRASS)	2-280050-1	BB	
△		(NICKEL PLTD)	ACCIAIO (STEEL)	1-280050-3	BB	
△		(NICKEL PLTD)	ACCIAIO (STEEL)	1-280050-2	BB	
△		ST. (TIN PLTD)	OTTONE (BRASS)	280050-7	BB	
△		ST. (TIN PLTD)	OTTONE (BRASS)	280050-3	BB	
△		(UNPLTD)	BR. F. (PH. BR.)	280050-4	BB	
△		(UNPLTD)	ACCIAIO (STEEL)	280050-3	BB	
△		(UNPLTD)	OTTONE (BRASS)	280050-2	BB	
△		(UNPLTD)	OTTONE (BRASS)	280050-1	BB	
△		ST. (TIN PLTD)	BR. F. (PH. BR.)	180388-5	BB	
△		ST. (TIN PLTD)	OTTONE (BRASS)	180388-2	BB	
△		(UNPLTD)	OTTONE (BRASS)	180388-1	BB	

NOTE FINITURA (FINISH) MATERIALE (MATERIAL) NUMERO (P/N) REV

CUSTOMER DWG. FOR REFERENCE ONLY DISEGNO PER CLIENTE SOLO PER RIFERIMENTO

THIS DRAWING IS UNPUBLISHED RELEASE FOR PUBLICATION 19

REV.	REVISIONI (REVISION RECORD)	DIS. DATA (DR DATE)	APP. (APP.)
BD1	REVISED PER ECO-10-000443	KK 21 MAR 97	
BD	UNIFY CUST. TO PRD. DWG REV ET00-009-04	H.Y. 24 FEB 2002	
BC1	ADDED NEW P/Ns FOR ET00-0207-02	H.Y. 18 OCT 2002	
BC	OBSOLETE P/N 2-280050-2 ET00-0173-00	H.Y. 12 JUN 2000	
BB1	ADDED NOTE 5 ON PART 1-280050-2 ET00-0142-00	H.Y. 22 APR 2000	
BB	OBSOLETE PARTS FOR ET00-0301-99	R.F. 28 MAR 2000	
BA	P/N 2-280050-3 ADDED FOR ET00-0002-99 RE-DRAWN AND	H.Y. 15 FEB 1999	
AV	REVISED FOR ET00-0107-97	A.F. 17 FEB 1997	
H	REVISED FOR ET00-0101-94	M.P. 28 JUN 1997	

DIAM. ISOLANTE (INS. DIA. RANGE)	RANGO FILO (WIRE RANGE)	SCALA (SCALE)
2.3-3.3	0.5-1.5	-

AMP AMP ITALIA S.p.A. Corso F.lli Cervi, 15 COLLENO (TORINO)

DESCRIZIONE (DESCRIPTION) .250 SERIES FLAG FASTON REC.

LOC. SIZE (DWG NO) 1 A3

NUMERO (SCALE) C-180388

REV. (SHEET) BO1

FOGLIO (SHEET) 1 (OP) 1

DISTRIBUZIONE (PRINT DIST.)