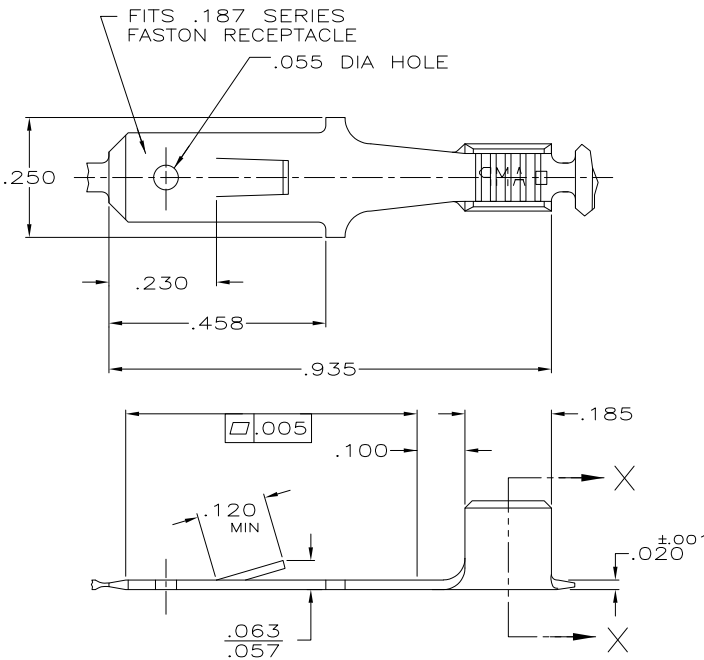


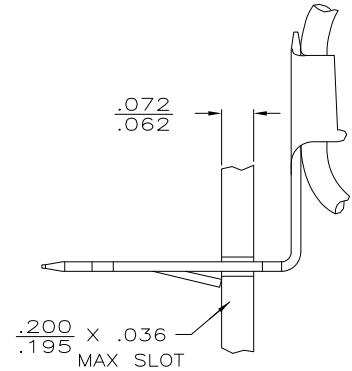
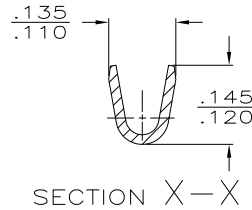
DRAWING MADE IN THIRD ANGLE PROJECTION

THIS DRAWING IS UNPUBLISHED. RELEASED FOR PUBLICATION .19
 © COPYRIGHT 19 BY AMP INCORPORATED. ALL INTERNATIONAL RIGHTS RESERVED.

LOC	DIST	ZONE	LTR	DESCRIPTION	DATE	APPD
AF	50	S		ADDED -4 PER OG3A-0053-99	26JUL99	JR/DE
		S1		REVISED PER ECO-09-020932	07SEP09	AEG



- 1 CONTINUOUS STRIP ON REEL.
- 2 REVERSE REEL OF 61441-2.
- 3 OBSOLETE PARTS: OBSOLETE CIS STREAMLINING PER D.RENAUD/D.SINISI



—INSTALLED VIEW —
TO BE BENT BY CUSTOMER

OBSOLETE	-	61441-4
	TIN	61441-3
	TIN	61441-2
SUPERSEDED	21-16 AWG	61441-1

MAG WIRE SIZE	FINISH	PART NO
21-16 AWG	TIN	61441-4
	TIN	61441-3
	PRE-TIN	61441-2
		61441-1

DO NOT SCALE PRINT. UNLESS SPECIFIED DIMENSIONS ARE IN INCHES TOLERANCES ON: 2. PLC DEC ± 3. PLC DEC ± .015 ANGLES ±	DR 1/25/91 JR RUTH CHK 1/28/91 MS FEHER APPD 1/28/91 G REINER D REINER	AMP Incorporated Harrisburg, PA 17105-3608	
MATERIAL #2H BRASS	PRODUCT SPEC -	NAME TAB, FASTON,™AMPLIVAR,™ .187 SERIES	
FINISH SEE TABLE	APPLICATION SPEC -	SIZE B	CAGE CODE 00779
	WEIGHT -	SCALE 5:1	DRAWING NO 61441
			SHEET 1 OF 1

AMP 1470-15 REV 11-89 Transferred 021003,145024 (YMMDD.HHMMSS) from
 ComputerVision, Inc., Medusa Revision 12.2.51

CUSTOMER DRAWING