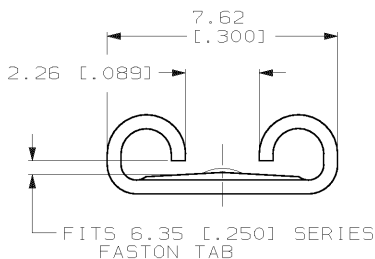


DRAWING MADE IN THIRD ANGLE PROJECTION

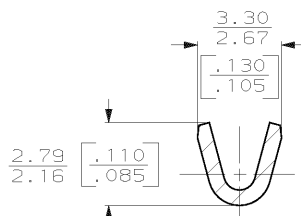
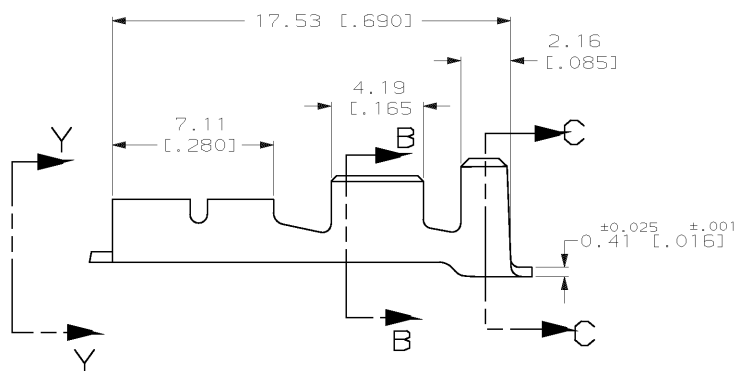
THIS DRAWING IS UNPUBLISHED. RELEASED FOR PUBLICATION, 19 .
 © COPYRIGHT 19 BY AMP INCORPORATED. ALL INTERNATIONAL RIGHTS RESERVED.

LOC	DIST	P	F	ZONE	LTR	DESCRIPTION	DATE	APPD
AF	50							
				C		ADDED -2 PER OG1A-0045-98	3/18/98	JR/JW

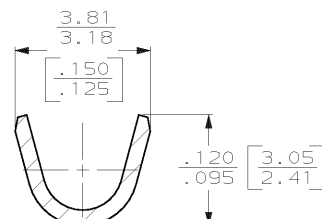
- 1 CONTINUOUS STRIP ON REELS
- 2 MATING TAB THK TO BE 0.51±0.025 [.020±.001].
- 3 WIRE SIZE IS #24-#19 MAGNET WIRE.
- 4 INSULATION RANGE IS 1.27-2.03 [.050-.080] DIA.



VIEW Y-Y
SCALE 8:1



SECTION B-B
SCALE 8:1



SECTION C-C
SCALE 8:1

0.002032 [.000080] MIN TIN	63623-2
-	63623-1
FINISH	PART NO
DR 8/23/91 JR RTH CHK 8/23/91 MS FEHER APPD 8/23/91 C HEVERS APPD 8/23/91 R KUZO	
AMP AMP INCORPORATED Harrisburg, Pa. 17105	
NAME RECEPTACLE, FASTON,™ L.I.F., AMPLIVAR, 6.35 [.250] SERIES	
SIZE B	FSCM NO 00779
SCALE 6:1	DRAWING NO 63623
WEIGHT -	SHEET 1 OF 1

TYPE	WIDTH	TYPE	WIDTH	HEIGHT	WIRE
F	2.79 [.110]	F	2.29 [.090]	1.19 [.047]	0.6mm ² [19]
				1.14 [.045]	0.5mm ² [20]
				1.07 [.042]	0.3mm ² [22]
				1.04 [.041]	0.2mm ² [24]

DO NOT SCALE PRINT. UNLESS SPECIFIED DIMENSIONS ARE IN MM (INCHES)
 TOLERANCES ON:
 1. PLC DEC ± .025 (.010)
 2. ANGLES ± .5°

MATERIAL H04 BRASS
 FINISH SEE TABLE

TYPE INSUL BARREL CRIMP
 TYPE WIRE BARREL CRIMP