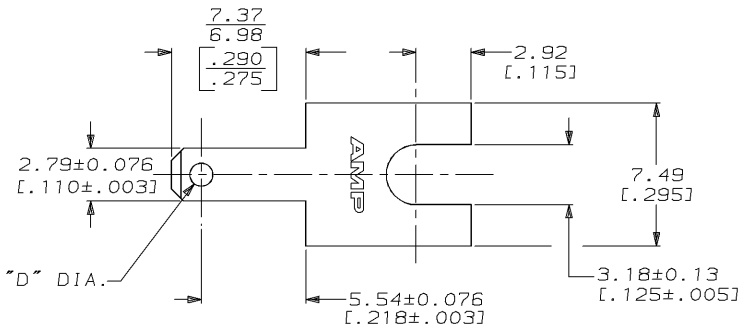


DRAWING MADE IN THIRD ANGLE PROJECTION

THIS DRAWING IS UNPUBLISHED. RELEASED FOR PUBLICATION, 19 .
 © COPYRIGHT 19 BY AMP INCORPORATED. ALL INTERNATIONAL RIGHTS RESERVED.

LOC	DIST	REVISIONS				
P	F	ZONE	LTR	DESCRIPTION	DATE	APPD
AF	50		P	REACT 1-62061-0 PER 0L10-0075-97	2/14/97	JR/PD



- 1 SUPPLIED IN LOOSE PIECE.
- 2 DIMPLE ON BOTH SIDES.
- 3 DIMPLE ON ONE SIDE ONLY.
- 4 TIN PLATE 0.002032 [.000080] MIN.

	NO HOLE OR DIMPLE	TIN			
OBSOLETE	1.22 [.048] DIMPLE	NONE	0.46±0.018 [.018±.0007]	BRASS	1-62061-0
OBSOLETE	1.22 [.048] DIMPLE	NONE	0.81±0.007 [.032±.0003]	BRASS	62061-9
OBSOLETE	1.22 [.048] DIMPLE	NONE	0.51±0.007 [.020±.0003]	BRASS	62061-8
OBSOLETE	1.22 [.048] DIMPLE	NONE	0.41±0.007 [.016±.0003]	BRASS	62061-7
OBSOLETE	1.22 [.048] DIMPLE	NONE	0.81±0.007 [.032±.0003]	BRASS	62061-6
OBSOLETE	1.22 [.048] DIMPLE	NONE	0.51±0.007 [.020±.0003]	BRASS	62061-5
OBSOLETE	1.22 [.048] DIMPLE	NONE	0.41±0.007 [.016±.0003]	BRASS	62061-4
	1.22 [.048] HOLE	NONE	0.41±0.007 [.016±.0003]	BRASS	62061-3
	1.22 [.048] HOLE	NONE	0.81±0.007 [.032±.0003]	BRASS	62061-2
	1.22 [.048] HOLE	NONE	0.51±0.007 [.020±.0003]	BRASS	62061-1
	"D" DIA ±0.07 [.003]	FINISH	MATERIAL		PART NO
DO NOT SCALE PRINT. UNLESS SPECIFIED DIMENSIONS IN mm (INCHES) TOLERANCES ON: 1 PLC DEC ± 0.25 (.010) 2 PLC DEC ± - ANGLES ± -		DR 9/8/84 JR BUTH	AMP Incorporated Harrisburg, PA 17105-3608		
MATERIAL SEE TABLE		CHK 9/8/84 MS FEHER			
FINISH SEE TABLE		APPD 9/8/84 P BESANTIS	NAME TAB, FASTON, 2.79 [.110] SERIES		
		PRODUCT SPEC -	SIZE B	CAGE CODE 00779	DRAWING NO C=62061
		APPLICATION SPEC -	SCALE 5:1	SHEET 1 OF 1	
		WEIGHT -	CUSTOMER DRAWING		

THIS DRAWING IS A CONTROLLED DOCUMENT FOR AMP INCORPORATED. IT IS SUBJECT TO CHANGE AND THE CONTROLLING ENGINEERING ORGANIZATION SHOULD BE CONTACTED FOR THE LATEST REVISION.