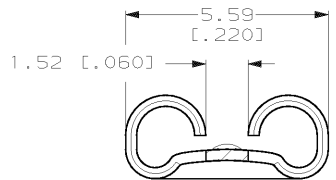
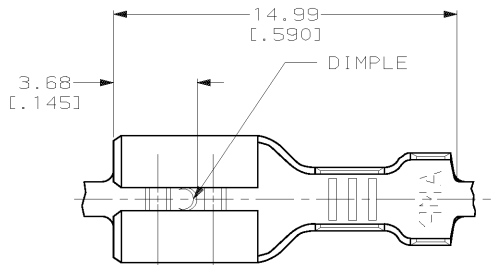


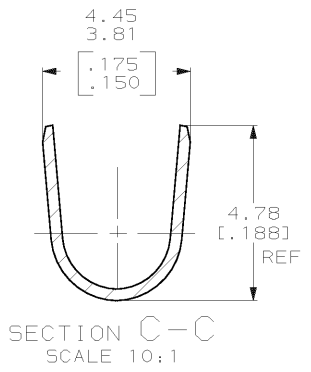
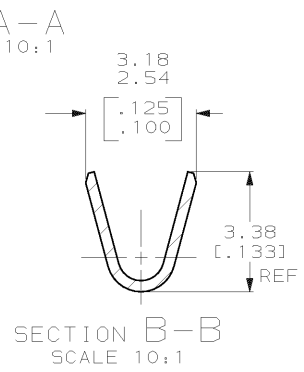
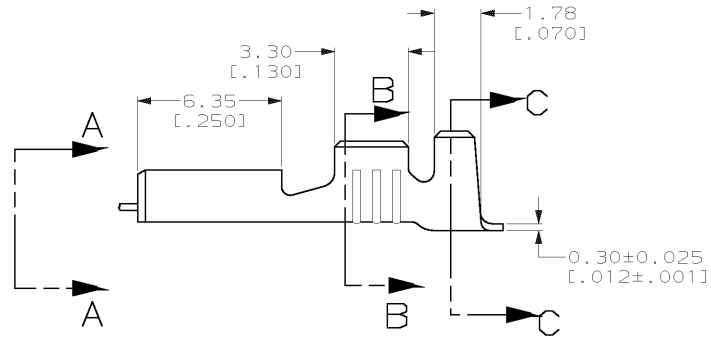
DRAWING MADE IN THIRD ANGLE PROJECTION

THIS DRAWING IS UNPUBLISHED. RELEASED FOR PUBLICATION, 19  
 © COPYRIGHT 19 BY AMP INCORPORATED. ALL INTERNATIONAL RIGHTS RESERVED.

LOC	DIST	P	F	ZONE	LTR	REVISIONS	DATE	APPD.
AF	50					D REDRAWN PER 0L10-0012-98	1/29/98	JR/JG



- 1 CONTINUOUS STRIP ON REELS.
- 2 MATING TAB THK IS 0.81±0.025 [0.032±.001].
- 3 WIRE SIZE IS [#20-#16] AWG.
- 4 INSULATION RANGE IS 2.29-3.30 [0.090-.130] DIA.



62865-1  
PART NO

DO NOT SCALE PRINT. UNLESS SPECIFIED DIMENSIONS IN INCHES TOLERANCES ON: 2. PLC DEC ± 3. PLC DEC ± 0.38 (1.015) ANGLES # -	DR 1/29/98 JR RUTH CHK 1/29/98 MS FEHER APPD 1/29/98 J SILLESPIE APPD 1/29/98 D BRATINA
MATERIAL #4H BRASS	PRODUCT SPEC -
FINISH 0.002032 [0.000080] MIN TIN	APPLICATION SPEC -
	WEIGHT -

AMP INCORPORATED Harrisburg, Pa. 17105		
NAME RECEPTACLE, FASTON, 4.75 [0.187] SERIES		
SIZE <b>B</b>	CAGE CODE 00779	DRAWING NO 62865
SCALE 6:1	SHEET 1 OF 1	