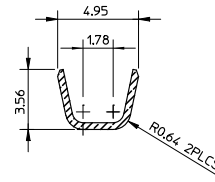
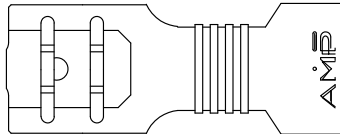
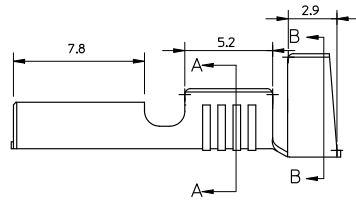
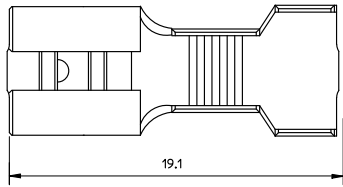
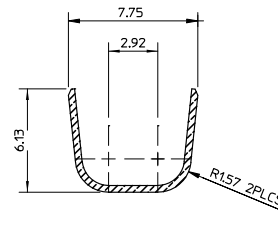


DRAWING MADE IN THIRD ANGLE PROJECTION



SECTION A-A



SECTION B-B

SUPERSEDED BY -7

REVISION	DATE	DESCRIPTION	FINISH	MATERIAL	PART No
-			PRE TIN	BRASS	190549-7
-			POST TIN PLATED	BRASS	190549-4
-			-	NICKEL SILVER	190549-2
WIRE RANGE: 2X1.5 sq mm		REMARKS	FINISH	MATERIAL	PART No
INSULATION RANGE: Ø2X3.3 mm		MATERIAL SEE TABLE		FINISH SEE TABLE	
		DATE 18/04/94	CHK W RIEDE	AMP Australian AMP Pty. Limited Rabon Avenue, CASTLE HILL NSW	
		DR H THAI	APP -		
		NAME RECEPTACLE, FASTON, DOUBLE WIRE, 0.250			LOC U
C	29/11/05	WR			
B	4/6/96	BL			
A	17/5/95	BL			
REVISION RECORD		SCALE 4:1	SIZE A3	DWG No. C-190549	SHEET 1 OF 1
P	F	LTR	CUSTOMER DRAWING		

THIS INFORMATION IS CONFIDENTIAL AND DISCLOSED TO YOU BY AMP OR ITS SALES REPRESENTATIVES OR OTHER AMP PERSONNEL WITHOUT WRITTEN AUTHORIZATION FROM AUSTRALIAN AMP

8 7 6 5 4 3 2 1

F
E
D
C
B
A