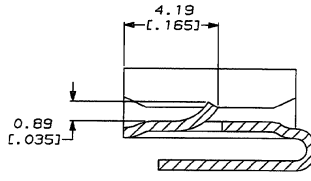
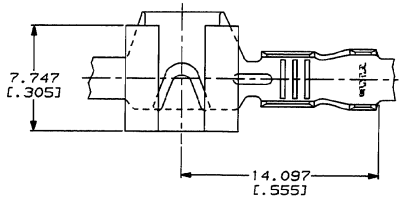


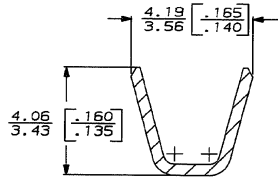
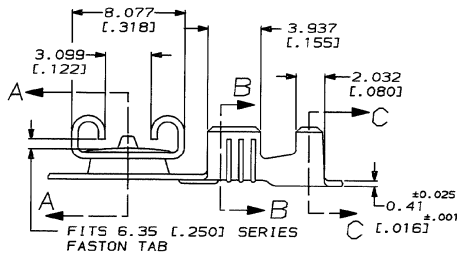
4
DRAWING MADE IN THIRD ANGLE PROJECTION
THIS DRAWING IS UNPUBLISHED. RELEASED FOR PUBLICATION
COPYRIGHT 19 BY AMP INCORPORATED. ALL INTERNATIONAL RIGHTS RESERVED.

LOC		DIST		REVISONS				DATE	APPD
P	F	ZONE	LTR	DESCRIPTION					
AF	50			D	REV PER 0086-93		4/14/83	JR/CM	

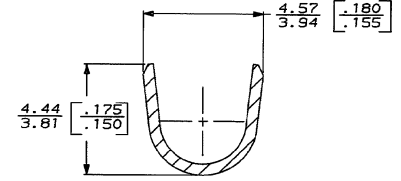
1 CONTINUOUS STRIP ON REELS.



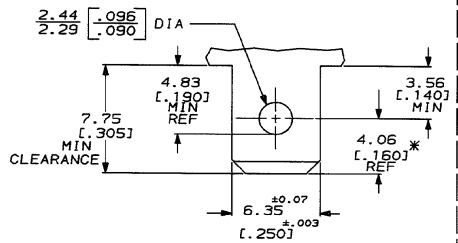
SECTION A-A
SCALE 8:1



SECTION B-B
SCALE 10:1



SECTION C-C
SCALE 10:1



RECOMMENDED MATING TAB

MAT'L: 1/2 H BRASS OR NICKEL PL STL

* TO BE USE ONLY WHEN SHOULDER IS ELIMINATED

2.29-3.30 [.090-.130]	0.8-2.0mm ² [18-14]	0.81 [.032]	63541-1
INSUL RANGE	WIRE SIZE	MATING TAB THK ±.001	PART NO
DO NOT SCALE PRINT. UNLESS SPECIFIED DIMENSIONS IN mm [INCHES] TOLERANCES ON: 2 PLC DEC ± .025 [.010] ANGLES ±	DR 6/27/89 JR RUTH CHK 6/27/89 P FORTNEY APPD 6/27/89 J SULLESPIE	AMP AMP INCORPORATED Harrisburg, Pa. 17105	
MATERIAL	PRODUCT SPEC	NAME	
4M BRASS	-	RECT., FASTON, FLAG, REVERSIBLE, LOCK-ON, 6.35 [.250] SERIES	
FINISH	APPLICATION SPEC	SIZE	CAGE CODE
0.000203 [.000080] MIN MIL-T-10727	-	C	00779
	WEIGHT	SCALE	DRAWING NO
	-	5:1	63541
			SHEET 1 OF 1



AMP 1471-6 REV 5-82
14 APR 1983 13.35.27

CUSTOMER DRAWING