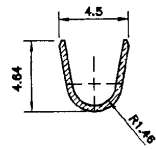
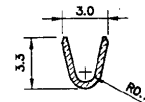
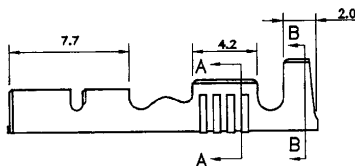
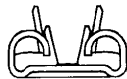
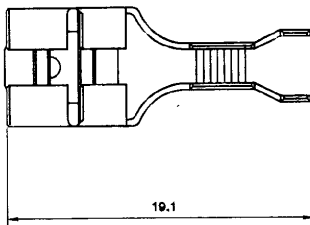
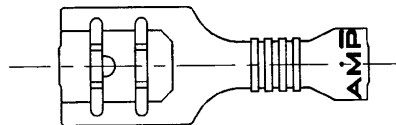


DRAWING MADE IN THIRD ANGLE PROJECTION



SECTION A-A

SECTION B-B



NOTE 1:
THE FIRST INSERTION SHALL
NOT BE MORE THAN 45N
2:
ALL OTHER SPECIFICATIONS
ARE IN COMPLIANCE TO AS3169.

△ OBSOLETE PARTS: OBSOLETE CIS STREAMLINING PER D.RENAUD/D.SINISI

THIS INFORMATION IS CONFIDENTIAL AND DISCLOSED TO ANY OTHER PARTY WITHOUT THE WRITTEN AUTHORIZATION FROM AUSTRALIAN AMP

△ OBSOLETE

CONTROLLED

			PRE TIN	BRASS	190713-7
			TIN PLATED	BRASS	190713-4
			REMARKS	FINISH	MATERIAL
			INSULATION RANGE: #2.29-3.3 mm		WIRE RANGE: 0.5-1.5 sq mm
			DATE 25/01/95	CHK VK	DR RP
			APP BL	AMP Australia, Asia, UK, Canada	
			RECEPTACLE, FASTON, LOW INSERTION FORCE, 0.250		
			SCALE 4:1 or SHOWN	SIZE A3	DWG No. C-190713
					SHEET 1 OF 1
					REV A1

CUSTOMER DRAWING

ORIGINAL

8 7 6 5 4 3 2 1

F
E
D
C
B
A