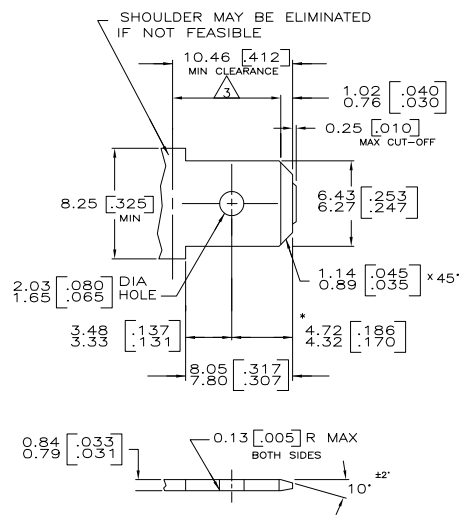


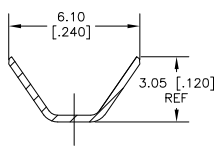
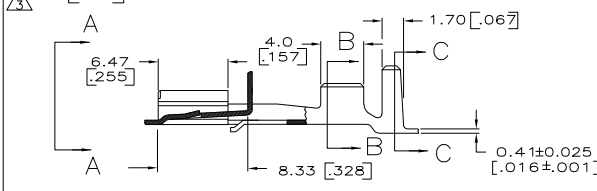
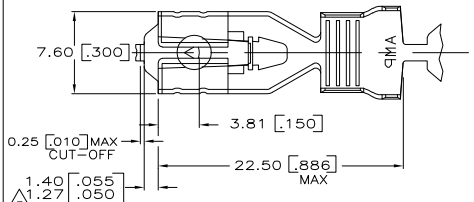
THE DRAWING IS UNPUBLISHED. RELEASED FOR PUBLICATION. BY TYCO ELECTRONICS CORPORATION. ALL RIGHTS RESERVED.

LOC	QTY	REV	DESCRIPTION	DATE	BY	APP
AF	50	A1	REVISED PER ECR-06-020824	07SEP06	HMR	EH

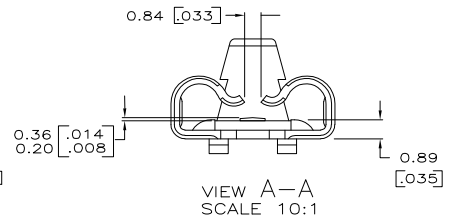
SUGGESTED MATING TAB



- 1 - MATL: 1/2H BRASS OR NICKEL PL STEEL.
- 2 - NO BURRS PERMISSIBLE AT HOLE.
- 3 - MUST BE FLAT WITHIN 0.076 [003] OVER THIS LENGTH.
- 4 - TIN PLATING IS REQUIRED ON BRASS WHEN TERMINAL TEMP. IS OVER 225° F
- 5 - HOLE MUST BE SYMMETRICAL ABOUT TAB C_Q WITHIN 0.076 [003]
- * TO BE USED ONLY WHEN SHOULDER IS ELIMINATED.



SECTION B-B
SCALE 8:1



SECTION C-C
SCALE 8:1

- 1 DIMENSIONS IN BRACKETS ARE IN INCHES.
- 2 PRODUCT PROVIDED IN STRIP FORM, BREAKS MAY BE PRESENT.
- 3 THE 1.27-1.40 [0.050-0.055] DIMENSION MUST BE MAINTAINED BY THE APPLICATOR CUT-OFF TO ENSURE THE PROPER LOCKING FUNCTION OF THE RECEPTACLE.
- 4 WIRE RANGE: #18-#16, TWO #18's, OR TWO #20's AWG.
- 5 INSULATION RANGE: 2.67-5.33mm² OR TWO AT 2.67mm² MAX. [1.05-.210 DIA OR TWO AT .105 MAX DIA].
- 6 PRELIMINARY - NOT FOR PRODUCTION.

TIN 0.002032 [0.00080] MIN	1742354-2
-	1742354-1
FINISH	PART NO.

THIS DRAWING IS A CONTROLLED DOCUMENT.		BY M.S. FEHER 130C12005	DATE 130C12005	APPROVED BY E. HOWARD 130C12005	DATE 130C12005	REVISIONS
DIMENSIONS: TO DRAWING UNLESS OTHERWISE SPECIFIED:		mm [INCHES]		PRODUCT SPEC		RECEPTACLE, POSITIVE LOCK, .250 SERIES
Ø	PLC	±	-	APPLICATION SPEC	114-2074	SIZE A2
1	PLC	±	0.25 [010]	WEIGHT	-	QTY 00779
2	PLC	±	-	CUSTOMER DRAWING	SCALE 5:1	SHEET 1 of 1
3	PLC	±	-			REV A1
4	PLC	±	-			
5	PLC	±	-			
6	PLC	±	-			

1742354

A