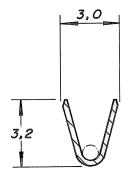
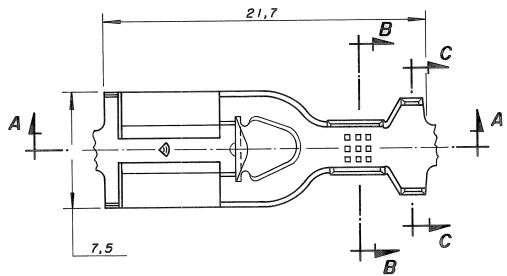


C 626 581 1-1

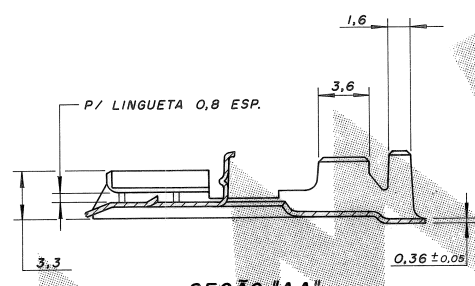
DO NOT SCALE
DIMENSIONS IN mm

METRIC

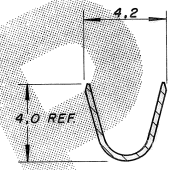
3rd ANGLE PROJECTION



SEÇÃO "BB"



SEÇÃO "AA"



SEÇÃO "CC"

OTHER TREATMENT	PRÉ- ESTANHADO	MATERIAL	LATÃO	PART NUMBER	626 581 - 2
	FINISH		LATÃO		626 581 - 1
CUSTOMER DWG for REFERENCE ONLY		THIS DRAWING IS UNPUBLISHED. RELEASED FOR PUBLICATION IS © COPYRIGHT 19 BY AMP DO BRASIL LTDA S.P. ALL INTERNATIONAL RIGHTS RESERVED AMP PRODUCTS MAY BE COVERED BY U.S. AND FOREIGN PATENTS AND/OR PATENTS PENDING.			
		TOLERANCES UNLESS OTHERWISE STATED DEC ± 0,4 ANGLES ± 1°	INS. DIA. RANGE Ø 2,1 - 2,9 mm	WIRE RANGE 05 - 1,5 mm ²	SCALE
		DR: VALTER	Tyco Electronics do BRASIL LTDA. São Paulo, Brasil		
C REV. ECO JD. 009283 HC WLS MAY 10		CHK: [Signature]	DESCRIPTION POSITIVE LOCK RECEPT. MK II .250 S.		
BI ECO. 09-026444 KK AEG NOV 09			Dwg No: A3		
B REDESENHADO C/ MODIF. V.S. T.V. 02.12.86			SHEET 1 OF 1		
100	REVISION RECORD	DR	CHK	DATE	APP.