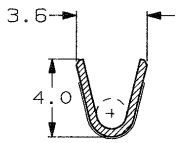


SCALA NON IMPERATIVA
(DO NOT SCALE)
DIMENSIONI IN mm
(DIMENSIONS IN IN)

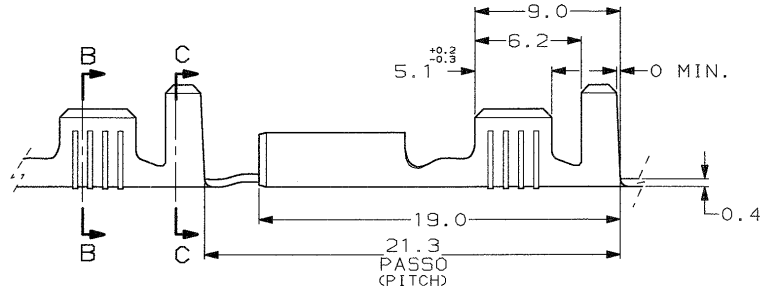
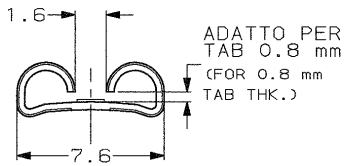
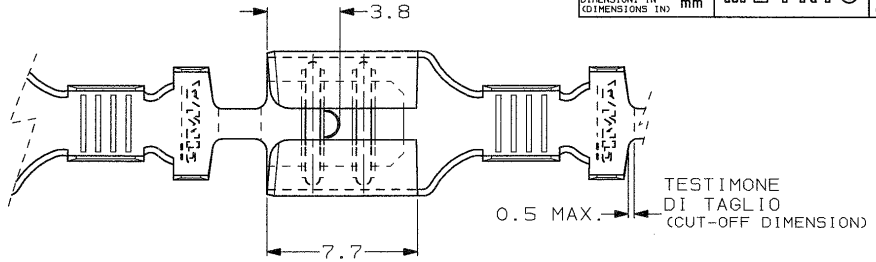
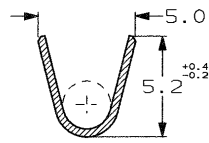
METRIC

PROIEZIONE EUROPEA
(EUROPEAN PROJECTION)

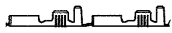
SEZIONE B-B
(SECTION B-B)



SEZIONE C-C
(SECTION C-C)



1) STATO DI FORNITURA -SCALA 1:1
(SUPPLY CONDITION -SCALE 1:1)



SENDO DI USCITA
DEL TERMINALE
DALLA BOBINA
(DIRECTION OFF
TOP OF REEL)

2) SPECIFICA DI PRODOTTO 108-20019
(PROD. SPEC. 108-20019)

3) BOBINATO CON INTRODUZIONE DI CARTA INTERPOSTA.
QUANTITA'/BOBINA 5'000, QUANTITA'/SCATOLA 10'000.
(REEL WITH INTERLEAVE PAPER STRIP,
Q.TY/REEL 5'000, Q.TY/BOX 10'000).

4) GIUNZIONE MEDIANTE SALDATURA IN ACCORDO A 115-16-1.
(SPLICE FREE ACCORDING TO 115-16-1).

4	NUDO (UNPLATED)	ACCIAIO (STEEL)	0-160916-6	P
	STAGNATO (TIN PLATED)	BRONZO FOSF. (PH. BRONZE)	0-160916-4	P
4	NUDO (UNPLATED)	BRONZO FOSF. (PH. BRONZE)	0-160916-3	P
	STAGNATO (TIN PLATED)	OTTONE (BRASS)	0-160916-2	P
NOTE	FINITURA / COLORE (FINISH / COLOUR)	MATERIALE (MATERIAL)	NUMERO (AMP P/N)	REV

CUSTOMER DWG. DISEGNO PER CLIENTE
FOR REFERENCE ONLY SOLO PER RIFERIMENTO

THIS DRAWING IS UNPUBLISHED. RELEASE FOR PUBLICATION IS BY AMP INCORPORATED, HARRISBURG, PA. ALL INTERNATIONAL RIGHT RESERVED. AMP PRODUCTS MAY BE COVERED BY U.S. AND FOREIGN PATENT AND/OR PATENT PENDING.

TOLLERANZE: SE NON DIVERSAMENTE SPECIFICATO (TOLERANCES: UNLESS OTHERWISE SPECIFIED)	DIAM. ISOLANTE (INS. DIA. RANGED)	RANGO FILO (WIRE RANGED mm2)	SCALA (SCALE)
± 0.3	2.1-3.1	1.0-2.5	5:1

AMP AMP ITALIA S.p.A.
Corso F.lli. Capri, 15
COLLENO (TORINO)

REV.	REVISIONI (REVISION RECORD)	DIS. DATA (DATE)	DESCRIZIONE (DESCRIPTION)	LOC. SIZE NUMERO (DWG NO)	REV.	FOGLIO (SHEET)
P1	ADDED DASH B ETOO-0222-00	H. Y. 10 OCT 2000	FASTON® Connector, .250" sr. REC. CONTACT.	IA3	C-160916	P1
P	OBSOLETE PARTS ETOO-0054-00	H. Y. 31 SEPT 2000				
N	REVISED & REDRAWN ETOO-0405-00	H. Y. 27 JAN 2000				
REV.	REVISIONI (REVISION RECORD)	DIS. DATA (DATE)				

DISTRIBUZIONE
PRINTING (15/17)

APP-114 7021 - 0002 1 2 3 4 5 6 7 8