

4

3

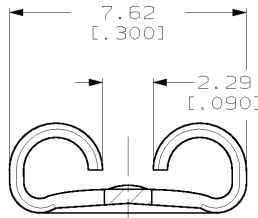
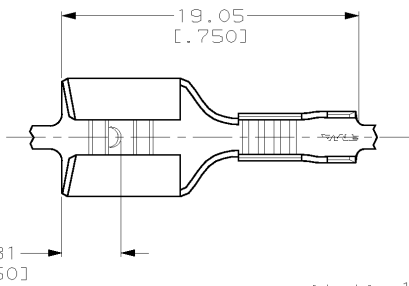
2

1

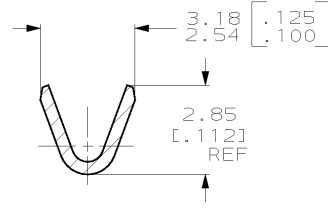
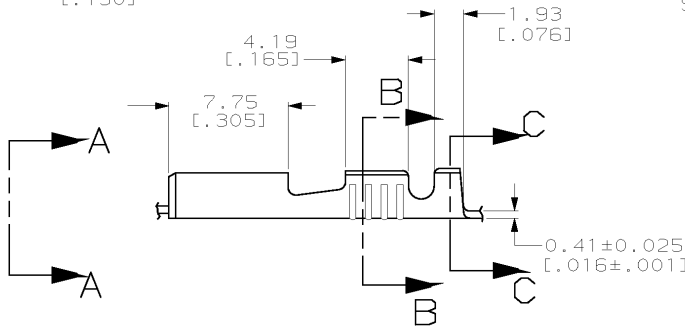
THIS DRAWING IS UNPUBLISHED. RELEASED FOR PUBLICATION  
 © COPYRIGHT 19 BY AMP INCORPORATED. ALL RIGHTS RESERVED.

LOC	DIST	REVISIONS				
P	LTR	DESCRIPTION	DATE	DWN	APVD	
AF	50	B	REDRAWN PER 0L10-0026-98	1/29/98	JR	JG

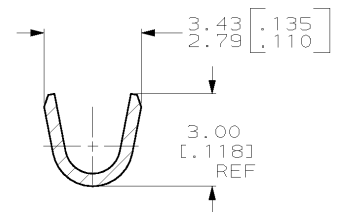
- 1 CONTINUOUS STRIP ON REELS.
- 2 WIRE SIZE IS [#22-#18] AWG.
- 3 INSULATION RANGE IS 1.52-2.54 [.060-.100] DIA.
- 4 MATING TAB IS 0.81±0.025 [.032±.001].



VIEW A-A  
SCALE 8:1



SECTION B-B  
SCALE 8:1



SECTION C-C  
SCALE 8:1

62866-1  
PART NO.

THIS DRAWING IS A CONTROLLED DOCUMENT.		DWN JR RUTH 1/29/98	AMP Incorporated Harrisburg, PA 17105-3608
DIMENSIONS: MM (INCHES)		CHK MS FEHER 1/29/98	
TOLERANCES UNLESS OTHERWISE SPECIFIED:		APVD J GILLESPIE 1/29/98	RECEPTACLE, FASTON, 6.35 [.250] SERIES
0 PLC ±- 1 PLC ±- 2 PLC ±0.38 [.015] 3 PLC ±- 4 PLC ±- ANGLES ±-		NAME	
MATERIAL H04 BRASS	FINISH 0.002032 [.000080] MIN TIN	PRODUCT SPEC APPLICATION SPEC	RESTRICTED TO
CUSTOMER DRAWING		WEIGHT -	SIZE CASE CODE DRAWING NO A3100779 C- 62866
		SCALE 4:1	SHEET 1 OF 1 REV B

AMP 1470-19 REV 11 JUN 97

15-DEC-97 11:55:57 amp13469 /ws/dep12121/dwg2121/u.faston-prem/u.250-str