

4

3

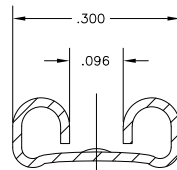
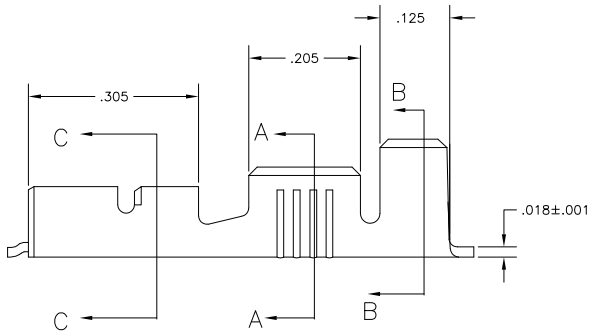
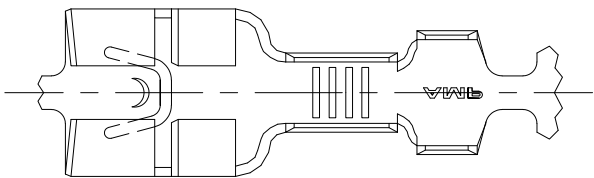
2

1

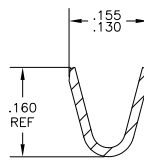
THIS DRAWING IS UNPUBLISHED. RELEASED FOR PUBLICATION
 © COPYRIGHT BY TYCO ELECTRONICS CORPORATION. ALL RIGHTS RESERVED.

LOC	DIST	REVISIONS			
P	LTR	DESCRIPTION	DATE	MIN	APD
AF	50	B1	REVISED PER ECR-10-008744	28APR10	HMR PD

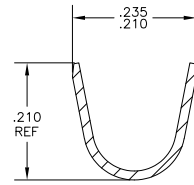
- 1 CONTINUOUS STRIP ON REELS
- 2 ACCEPTS #18-#14 AWG WIRE SIZE
CRIMP WIDTH, .120, F TYPE
- 3 INSULATION RANGE IS .120-.170 DIA
CRIMP WIDTH, .180, F OR O TYPE
- 4 MATING TAB THK IS .020±.001.



SECTION C-C



SECTION A-A



SECTION B-B

.000080 MIN TIN	63993-1
FINISH	PART NO

THIS DRAWING IS A CONTROLLED DOCUMENT.		DRN	JR_RUTH	21JUN02	Tyco Electronics Corporation Harrisburg, PA 17105			
DIMENSIONS: INCHES		CHK	DESANTIS	21JUN02				
OTHER DIMENSIONS: MILLIMETERS		P	DESANTIS	21JUN02	RECEPTACLE, FASTON, .250 SERIES			
MATERIAL: 4M BRASS		APD	DESANTIS	21JUN02				
FINISH: SEE TABLE		APP			SIZE	CAGE CODE	DRAWING NO	RESTRICTED TO
		WEIGHT			A2	00779	C-63993	
		CUSTOMER DRAWING			SCALE	8:1	SHEET	1 OF 1
					REV	B1		

AMP 1471-9 REV 31MM2000

63993

A