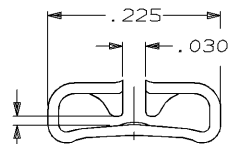
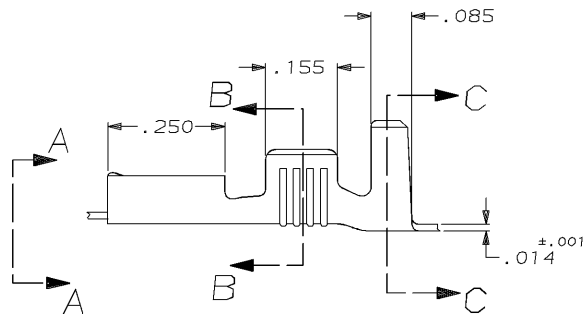
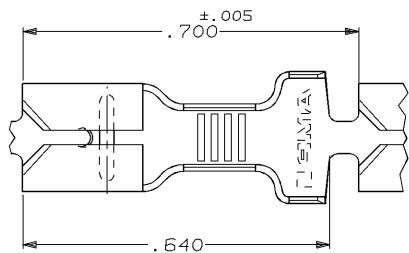


DRAWING MADE IN THIRD ANGLE PROJECTION

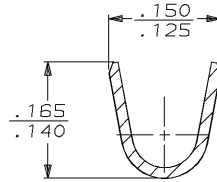
THIS DRAWING IS UNPUBLISHED. RELEASED FOR PUBLICATION, 19 .

© COPYRIGHT 19 BY AMP INCORPORATED. ALL INTERNATIONAL RIGHTS RESERVED.

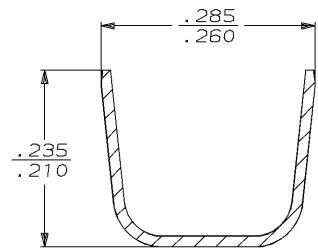
LOC	DIST	ZONE	LTR	REVISIONS	DATE	APPD
AF	50		B	REV PER 0710-0104-96	3/20/96	JR/PD



FITS .187 SERIES FASTON TAB  
VIEW A-A  
SCALE 8:1



SECTION B-B  
SCALE 8:1



SECTION C-C  
SCALE 8:1

- 1 TIN PLATE .000080 MIN THK.
- 2 CONTINUOUS STRIP ON REELS.

TYPE	WIDTH	STRIP LENGTH	TYPE	WIDTH	HEIGHT	WIRE
INSUL BARREL CRIMP	.250	.220 ±.015	WIRE BARREL CRIMP	.110	.066 (2) 18 .077 (2) 16 .071 14 .062 16 .056 18	±.002

.180 - .230 OR (2) .110 MAX	18-14 OR (2) #16'S	.020	63749-2
INSUL RANGE	WIRE SIZE	MATING TAB THK ±.001	PART NO
DO NOT SCALE PRINT. UNLESS SPECIFIED DIMENSIONS ARE IN INCHES TOLERANCES ON: 1 PLC DEC ± .010 2 ANGLE ± .1	DR 9/28/93 JR RUTH CHK 9/28/93 MS FEHER APPD 9/28/93 P DESANTIS APPD 9/28/93 R REINER PRODUCT SPEC	AMP INCORPORATED Harrisburg, Pa. 17105	
MATERIAL #4H BRASS	FINISH TIN	NAME RECEPTACLE, FASTON™ .187 SERIES	
APPLICATION SPEC 114-2036	WEIGHT -	SIZE B	CAGE CODE 00779
		SCALE 5:1	DRAWING NO 63749
		SHEET 1 OF 1	

AMP 1470-15 REV 6-89  
20-MAR-96 12:31:52 amp13469 /ws/dept2121/dwg2121/u.faston-ceb/u.187-str

CUSTOMER DRAWING