

4

3

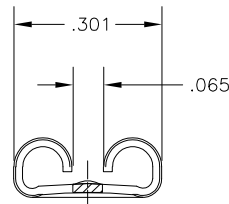
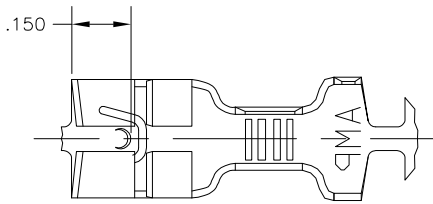
2

1

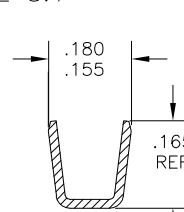
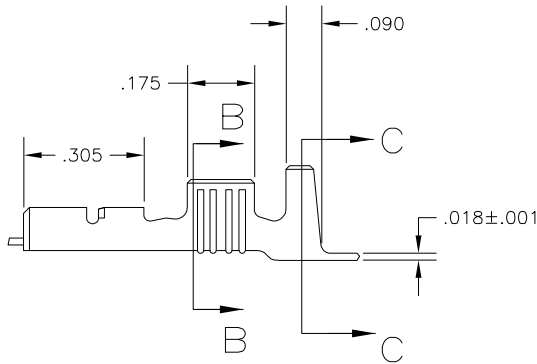
THIS DRAWING IS UNPUBLISHED. RELEASED FOR PUBLICATION  
 © COPYRIGHT - BY TYCO ELECTRONICS CORPORATION. ALL RIGHTS RESERVED.

LOC		DIST		REVISIONS			
P	LTR	DESCRIPTION		DATE	DWN	APVD	
AF	50	E1	REV PER ECR 05-017442	13DEC05	JR	PD	

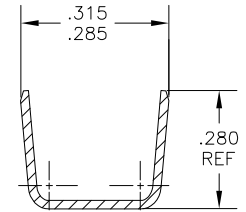
- 1 CONTINUOUS STRIP ON REELS
- 2 MATING TAB THK .032±.001
- 3 WIRE SIZE IS 16-12 OR TWO #18'S.
- 4 INSULATION RANGE .210-.265 OR TWO AT .120 MAX DIA.



VIEW A-A  
SCALE 5:1



SECTION B-B  
SCALE 5:1



SECTION C-C  
SCALE 5:1

.000150 MIN NICKEL	T2 STEEL	63757-2
-	H04 BRASS	63757-1
FINISH	MATERIAL	PART NO.

THIS DRAWING IS A CONTROLLED DOCUMENT.		DWN	JR RUTH	10/27/93		Tyco Electronics Corporation	
DIMENSIONS: INCHES		CHK	MS FEHER	10/27/93		Harrisburg, PA 17105-3608	
TOLERANCES UNLESS OTHERWISE SPECIFIED:		APVD	R REINER	10/27/93	NAME	RECPT, FASTON, LOW-INSERTION, .250 SERIES	
0 PLC ± -		PRODUCT SPEC			SIZE	CAGE CODE	DRAWING NO
1 PLC ± -		APPLICATION SPEC	114-2036		A3	00779	C-63757
2 PLC ± .010		WEIGHT			RESTRICTED TO		
3 PLC ± -					-		
4 PLC ± -					-		
ANGLES ± -					-		
MATERIAL SEE TABLE	FINISH SEE TABLE	CUSTOMER DRAWING		SCALE	4:1	SHEET	1 OF 1
				REV	E1		

AMP 1470-19 REV 31MAR2000