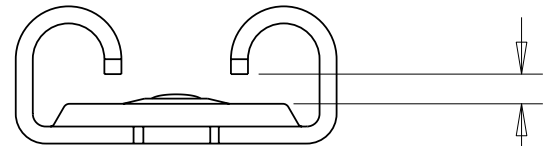
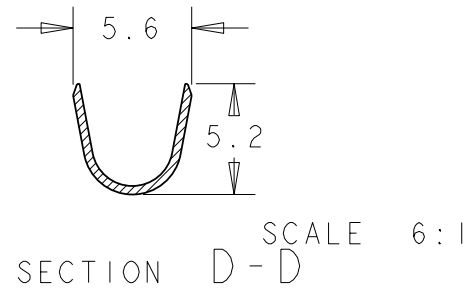
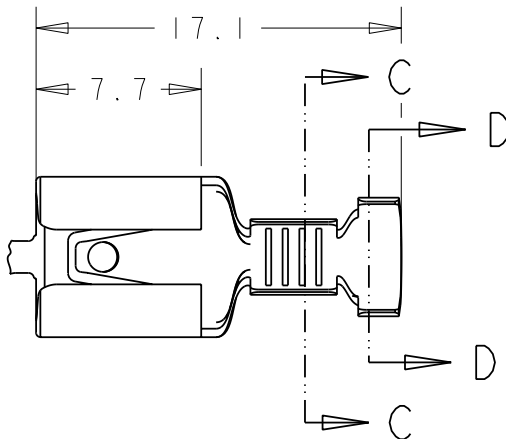
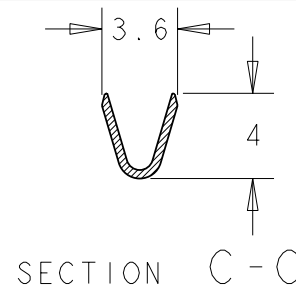
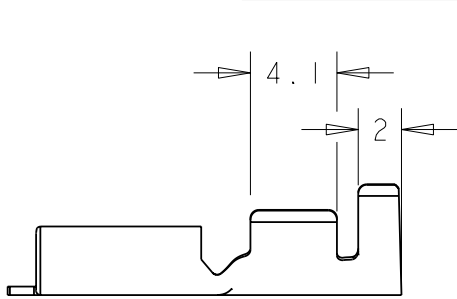


LOC	DIST	REVISIONS REVISIONES			DATE FECHA	DWN DIB	APVD APR
		P	LTR	DESCRIPCION			
AL	2		B	ES00-0007-02	24JAN02	A.H.	J.L.
			C	ES00-0133-03	08JAN04	J.L.	J.L.
			D	ET00-0026-05	29MAR05	A.V	G.T
			DI	REVISED PER ECO-09-025699	19DEC09	KK	AEG



PARA LENGÜETA CON AGUJERO DE 0,8 mm
DE ESPESOR
FOR TAB WITH HOLE OF 0.8 mm THICKNESS

NOTES: -

⚠️ OBSOLETE PARTS: OBSOLETE CIS
STREAMLINING PER
D. RENAUD/D. SINISI

1 GAMA DE HILO: 1,0 - 2,5 mm² ; GAMA DE AISLANTE: 3,0 - 4,3 mm
1 WIRE RANGE: 1.0 - 2.5 mm² ; ISULATION RANGE: 3.0 - 4.3 mm

-5	ACERO STEEL	PRENIQUELADO PRENI	
-4	BRONCE BRONZE	-	OBSOLETE
-3	LATON BRASS	PREESTANADO PRETIN	
-2	LATON BRASS	ESTANADO TIN PLATED	OBSOLETE
-1	LATON BRASS	-	
GUION DASH	MATERIAL	ACABADO FINISH	

2009

RELEASED FOR PUBLICATION
LIBRE DE SER PUBLICADO

THIS DRAWING IS UNPUBLISHED.
PLANO NO PUBLICADO

BY TYCO ELECTRONICS CORPORATION. ALL INTERNATIONAL RIGHTS RESERVED.
BY TYCO ELECTRONICS CORPORATION. TODOS LOS DERECHOS RESEVADOS. LOS PRODUCTOS AMP ESTAN CUBIERIOS POR PATENTES ACTUALES O PENDIENTES

DIMENSIONS: MEDIDAS, mm	DWN/DIB A. ALONSO	18FEB97	MATERIAL	TABLE	FINISH ACABADO	TABLE
TOLERANCES UNLESS OTHERWISE SPECIFIED: TOLERANCIAS POR OMISION	CHK/COMP J. LAZARO	30.9.97	Tyco Electronics Tyco Electronics AMP España, S.A. Barcelona. Spain.			
0 PLC/LUG ±0.4 1 PLC/LUG ±0.13 2 PLC/LUG ±0.13 3 PLC/LUG ±0.13 4 PLC/LUG ±0.001 ANGLES/ANGULOS ±	APVD/APR -	11OCT00	PRODUCT SPEC ESPEC PRODUCTO	RECEPTACULO FASTON 6,35 FASTON RECEPTACLE 6.35		
			108-22021 -1to-4 108-22080 -5	NAME TITULO		
			APPLICATION SPEC ESPEC APLICACION	SIZE TAM	CAGE CODE CODIGO	DRAWING NO PLANO NO
			114-2036	A4	00779	C=336236
	WEIGHT PESO	-	RESTRICTED TO RESTRINGIDO A			
	CUSTOMER DRAWING /PLANO DE CLIENTE			SCALE ESCALA	3:1	SHEET HOJA
				OF DE	1	REV DI