

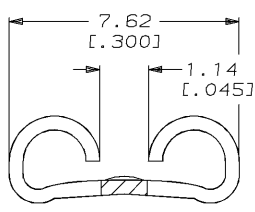
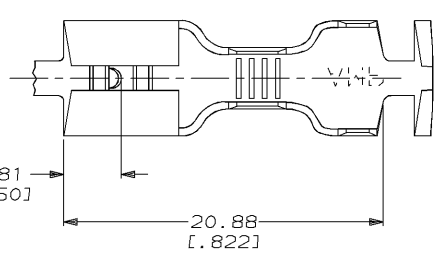
DRAWING MADE IN THIRD ANGLE PROJECTION

THIS DRAWING IS UNPUBLISHED. RELEASED FOR PUBLICATION, 19 .

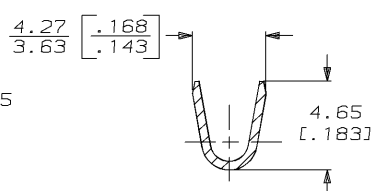
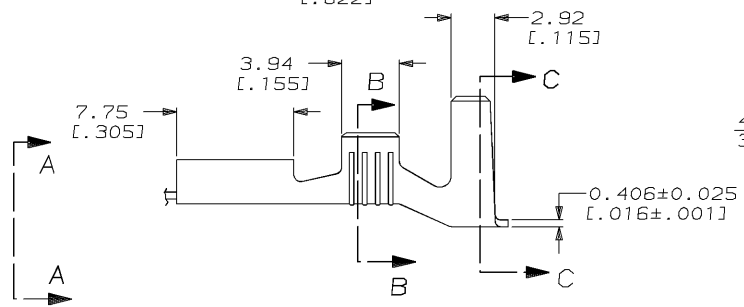
© COPYRIGHT 19 BY AMP INCORPORATED. ALL INTERNATIONAL RIGHTS RESERVED.

LOC	DIST	REVISIONS				
P	F	ZONE	LTR	DESCRIPTION	DATE	APPD
AF	50		A	REL -1 PER 0710-0107-96	3/20/96	JR/PD

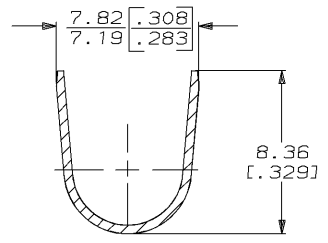
- CONTINUOUS STRIP ON REELS
- MATING TAB THK TO BE 0.81±0.025 [.032±.001].
- ACCEPTS WIRE SIZES [#16-#12] AWG.
- INSULATION RANGE IS 5.33-6.73 [.210-.265] DIA.



VIEW A-A
SCALE 8:1



SECTION B-B
SCALE 5:1



SECTION C-C
SCALE 5:1

63892-1

PART NO

DO NOT SCALE PRINT. UNLESS SPECIFIED DIMENSIONS IN mm [INCHES] TOLERANCES ON: 2 PLC DEC ± .025 (.010) ANGLES ± -		DR 2/23/96 JR RUTH	AMP INCORPORATED Harrisburg, Pa. 17105	NAME RECEPTACLE, FASTON™ 6.35 [.250] SERIES
MATERIAL 082 STEEL	CHK 2/23/96 NS FEHER	APPD 2/23/96 J HOSVIAK		
FINISH 0.00381 [.000150] NICKEL	PRODUCT SPEC -	APPD 2/23/96 V KARABCIJEVSKY	SIZE B	CAGE CODE 00779
	APPLICATION SPEC 114-2036	WEIGHT -	SCALE 4:1	DRAWING NO 63892
				SHEET 1 OF 1

AMP 1470-15 REV 6-89
20-MAR-96 13:08:00 amp13469 Au/dsp12121/dwg12121/Au.Faston-prn/Au.250-str

CUSTOMER DRAWING