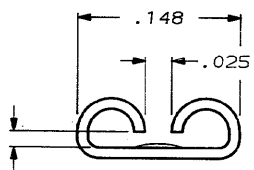
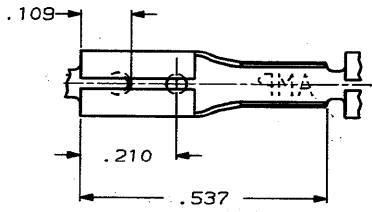


DRAWING MADE IN THIRD ANGLE PROJECTION

THIS DRAWING IS UNPUBLISHED. RELEASED FOR PUBLICATION .19
 © COPYRIGHT 1966 BY AMP INCORPORATED, HARRISBURG, PA. ALL INTERNATIONAL RIGHTS RESERVED. AMP PRODUCTS MAY BE COVERED BY U.S. AND FOREIGN PATENTS AND/OR PATENTS PENDING.

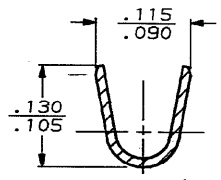
LOC	DIST	P	F	ZONE	LTR	DESCRIPTION	DATE	APPROVED
AF	50				A	REDRAWN	6-3-86	JR



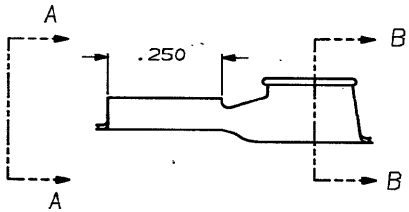
FITS .110 SERIES FASTON TAB

VIEW A-A

1 - CONTINUOUS STRIP ON REELS.



SECTION B-B



UNLESS OTHERWISE SPECIFIED DIMENSIONS ARE IN INCHES TOLERANCES ON: 2 PL DEC ± .015 ANGLES ± -		DR <i>JR JR</i> 6-3-86 CHK <i>Y Hester</i> 6-5-86 APPR <i>C. V. ...</i> 6-4-86 APPR <i>B. ...</i> 6-10-86	WIRE SIZE 20-16		TAB THK. .020 ±.001	PART NO. 41500
MATERIAL .010 BRASS	FINISH PRE-TIN	AMP INCORPORATED Harrisburg, Pa. 17105				
NAME .110 SERIES FASTON RECEPTACLE		SIZE B	FSOH NO. 00779	DRAWING NO. 41500		
WEIGHT		SCALE NTS	SHEET 1 OF 1			

CUSTOMER DRAWING

AMP 1470-15 REV 10-84