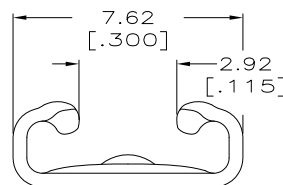
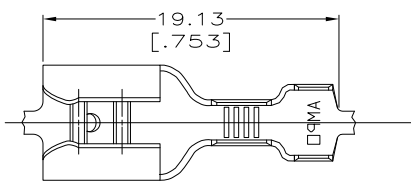


DRAWING MADE IN THIRD ANGLE PROJECTION

THIS DRAWING IS UNPUBLISHED. RELEASED FOR PUBLICATION

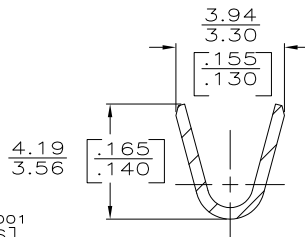
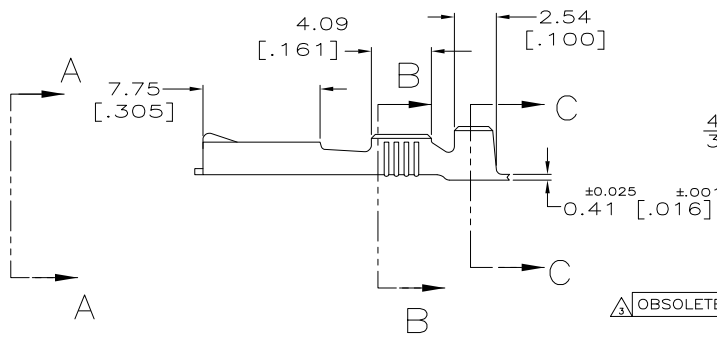
© COPYRIGHT 19 BY AMP INCORPORATED. ALL INTERNATIONAL RIGHTS RESERVED.

LOC	DIST	P	F	ZONE	LTR	REVISIONS	DATE	APPD
AF	50					01 REVISED PER ECO-09-021826	21AUG09	KK/AEG
						0 DRAWN PER 0266-94	5/26/94	JR/PD

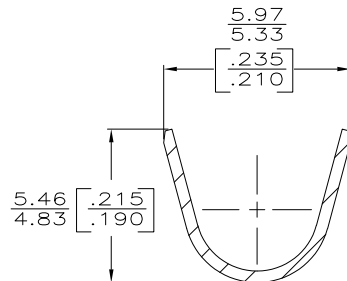


VIEW A-A
SCALE 8:1

- 1 CONTINUOUS STRIP ON REELS.
- 2 TIN PLATE 0.002032 [.000080] MIN THK.
- 3 OBSOLETE PARTS: OBSOLETE CIS STREAMLINING PER D.RENAUD/D.SINISI



SECTION B-B
SCALE 8:1



SECTION C-C
SCALE 8:1

OBSOLETE	3.05-4.32 DIA [.120-.170] DIA	[#18-#14] AWG	0.81 [.032]	TIN	60713-2
	INSULATION RANGE	WIRE SIZE	MATING TAB THK ±0.025 [.001]	FINISH	PART NO 60713-1
DO NOT SCALE PRINT. UNLESS SPECIFIED DIMENSIONS IN mm [INCHES] TOLERANCES ON: 2. PLC DEC ± 0.25 [.010] 3. PLC DEC ± - ANGLES ± -	MATERIAL H04 BRASS		AMP Incorporated Harrisburg, PA 17105-3608 NAME RECEPTACLE, FASTON, 6.35 [.250] SERIES		
FINISH SEE TABLE	APPLICATION SPEC -		SIZE B	CAGE CODE 00779	DRAWING NO C=60713
WEIGHT -			SCALE 4:1	SHEET 1 OF 1	

THIS DRAWING IS A CONTROLLED DOCUMENT FOR AMP INCORPORATED. IT IS SUBJECT TO CHANGE AND THE CONTROLLING ENGINEERING ORGANIZATION SHOULD BE CONTACTED FOR THE LATEST REVISION.