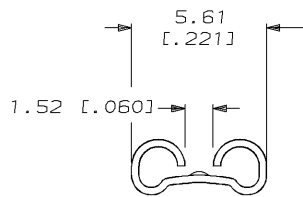
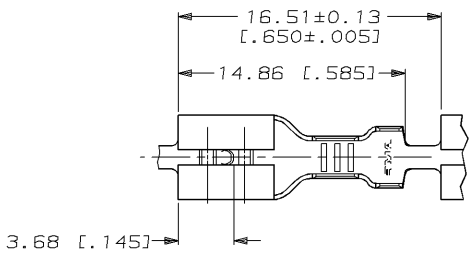


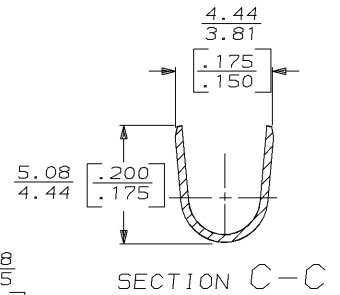
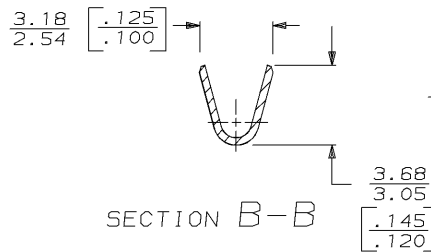
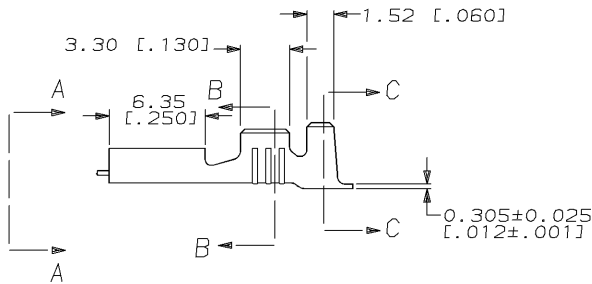
DRAWING MADE IN THIRD ANGLE PROJECTION

THIS DRAWING IS UNPUBLISHED. RELEASED FOR PUBLICATION, 19 .
 © COPYRIGHT 19 BY AMP INCORPORATED. ALL INTERNATIONAL RIGHTS RESERVED.

LOC	DIST	P	F	ZONE	LTR	REVISIONS	DATE	APPD
AF	50					REL PER 0L10-0048-97	2/11/97	JR/JG



- 1 CONTINUOUS STRIP ON REELS.
- 2 MATING TAB THK IS 0.51±0.025 [.020±.001].
- 3 WIRE SIZE IS [#20-#16] AWG.
- 4 INSULATION RANGE IS 2.29-3.30 [.090-.130] DIA.



THIS DRAWING IS A CONTROLLED DOCUMENT FOR AMP INCORPORATED. IT IS SUBJECT TO CHANGE AND THE CONTROLLING ENGINEERING ORGANIZATION SHOULD BE CONTACTED FOR THE LATEST REVISION.

DO NOT SCALE PRINT. UNLESS SPECIFIED DIMENSIONS ARE IN MM (INCHES) TOLERANCES ON: 2 PLC DEC ± 0.38 (.015) ANGLES ± -		DR 1/8/97 JR RUTH	AMP AMP Incorporated Harrisburg, PA 17105-3608	NAME RECEPTACLE, FASTON, .187 SERIES	
MATERIAL T2 STEEL		CHK 1/8/97 NS FEHER		SIZE B	CAGE CODE 00779
FINISH NICKEL		APPD 1/8/97 P BESANTIS	SCALE 4:1		SHEET 1 OF 1
		PRODUCT SPEC -	PART NO 63959-1		
		APPLICATION SPEC 114-2036	CUSTOMER DRAWING		
		WEIGHT -			