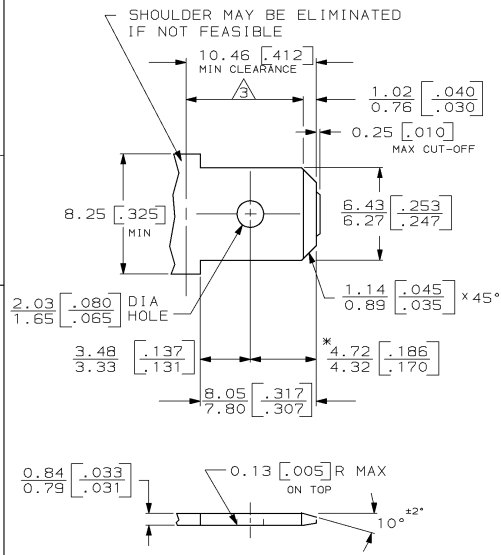
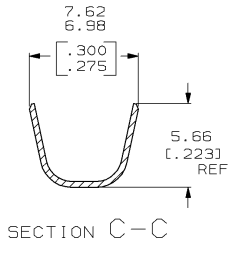
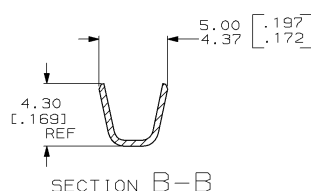
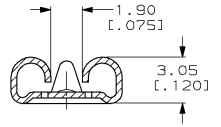
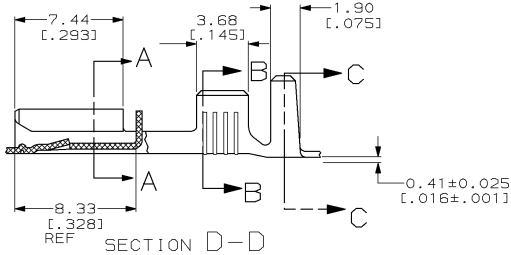
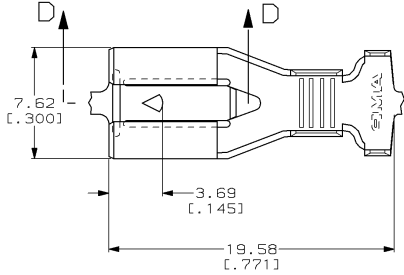


LOC	DIST	P	F	ZONE	LTR	REVISIONS	DATE	APPD
AF	50				A	REV & REL PER 061A-0366-98	10/16/98	JR/JH

SUGGESTED MATING TAB



- 1 - MATL: 1/2 H BRASS OR NICKEL PL STEEL.
 - 2 - NO BURRS PERMISSIBLE AT HOLE.
 - 3 - MUST BE FLAT WITHIN 0.076 [.003] OVER THIS LENGTH.
 - 4 - TIN PLATING IS REQUIRED ON BRASS WHEN TERMINAL TEMP. IS OVER 225°F.
 - 5 - HOLE MUST BE SYMMETRICAL ABOUT TAB C WITHIN 0.076 [.003]
- * TO BE USED ONLY WHEN SHOULDER IS ELIMINATED.



TIN 0.002032 [.000080] MIN	1217092-2
-	1217092-1
FINISH	PART NO
AMP AMP Incorporated Harrisburg, PA 17105-3608	
NAME RECEPTACLE, POSITIVE LOCK, 6.35 [.250] SERIES	
APPLICATION SPEC 114-2061	SIZE CAGE CODE DRAWING NO C 00779 C=1217092
WEIGHT -	SCALE 5:1 SHEET 1 OF 1

THIS DRAWING IS A CONTROLLED DOCUMENT FOR AMP INCORPORATED. IT IS SUBJECT TO CHANGE AND THE CONTROLLING ENGINEERING ORGANIZATION SHOULD BE CONTACTED FOR THE LATEST REVISION.