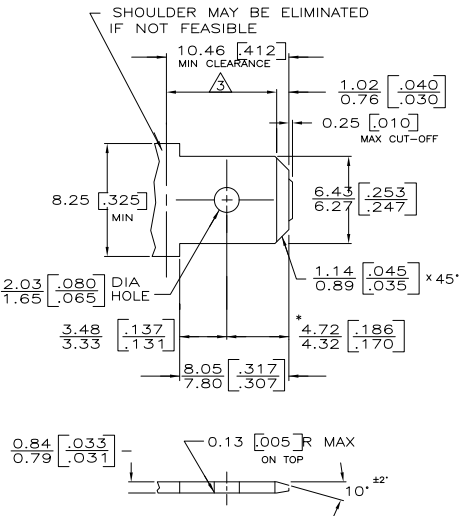
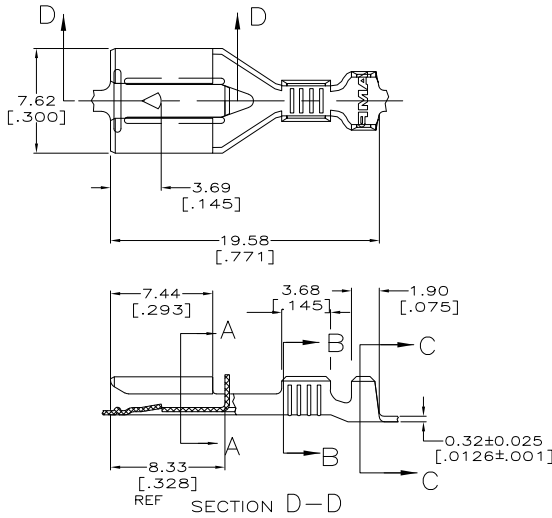


THIS DRAWING IS UNPUBLISHED. RELEASED FOR PUBLICATION
 BY TYCO ELECTRONICS CORPORATION. ALL RIGHTS RESERVED.

SUGGESTED MATING TAB

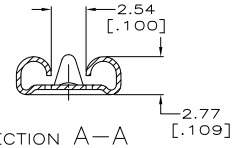


- 1 - MATL: 1/2 H BRASS OR NICKEL PL STEEL.
 - 2 - NO BURRS PERMISSIBLE AT HOLE.
 - 3 - MUST BE FLAT WITHIN 0.076 [0.003] OVER THIS LENGTH.
 - 4 - TIN PLATING IS REQUIRED ON BRASS WHEN TERMINAL TEMP. IS OVER 225° F.
 - 5 - HOLE MUST BE SYMMETRICAL ABOUT TAB C WITHIN 0.076 [0.003]
- * TO BE USED ONLY WHEN SHOULDER IS ELIMINATED.

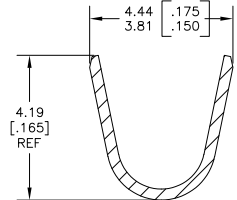


SECTION B-B
SCALE 10:1

- 1 CONTINUOUS STRIP ON REELS.
- 2 ACCEPTS #22-#18 AWG WIRE SIZES. WIRE CRIMP: .080 F TYPE
- 3 INSULATION RANGE IS 1.52-2.79 [0.060-0.110] DIA. INSULATION CRIMP: .130 F TYPE



SECTION A-A



SECTION C-C
SCALE 10:1

0.00381[0.000150] MIN SILVER PLATE	1217378-3
0.002032[0.000080] MIN TIN PLATE	1217378-2
-	1217378-1
FINISH	PART NUMBER

THIS DRAWING IS A CONTROLLED DOCUMENT.		DR. JR. RUTH	30MAR00	Tyco Electronics Corporation	
DIMENSIONS:		CHK. M.S. FEHRER	30MAR00	Harrisburg, PA 17105-3608	
INCHES		APPD. -	-	RECEPTACLE, POSITIVE LOCK, 6.35 [250] SERIES	
TOLERANCES UNLESS OTHERWISE SPECIFIED:		PRODUCT SPEC. -	-	RESTRICTED TO	
Ø PLC	±	APPLICATION SPEC. 114-2074	SIZE	CAGE CODE	DRAWING NO.
1 PLC	±	RIGHT	A2	00779	C=1217378
2 PLC	±	HEIGHT	-	-	-
3 PLC	±	CUSTOMER DRAWING	SCALE	5:1	SHEET 1 of 1
4 PLC	±	FINISH	SEE TABLE	REV	A3
ANGLES	±				