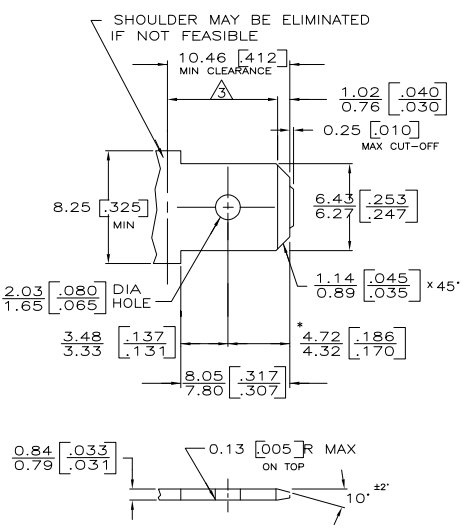
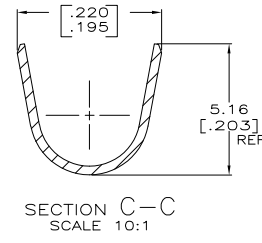
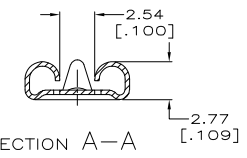
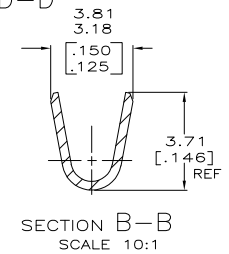
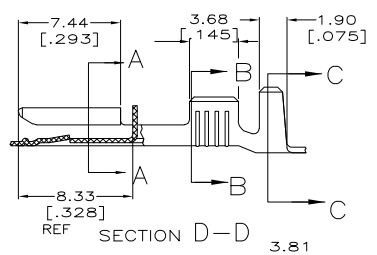
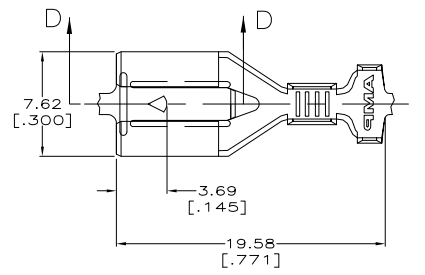


THIS DRAWING IS UNPUBLISHED. RELEASED FOR PUBLICATION. BY TYCO ELECTRONICS CORPORATION. ALL RIGHTS RESERVED.

### SUGGESTED MATING TAB



- 1 - MATL: 1/2 H BRASS OR NICKEL PL STEEL.
  - 2 - NO BURRS PERMISSIBLE AT HOLE.
  - 3 - MUST BE FLAT WITHIN 0.076 [.003] OVER THIS LENGTH.
  - 4 - TIN PLATING IS REQUIRED ON BRASS WHEN TERMINAL TEMP. IS OVER 225° F.
  - 5 - HOLE MUST BE SYMMETRICAL ABOUT TAB C Q WITHIN 0.076 [.003]
- \* TO BE USED ONLY WHEN SHOULDER IS ELIMINATED.



- 1 CONTINUOUS STRIP ON REELS.
- 2 REF CRIMP INFORMATION:  
WIRE CRIMP: .110 F TYPE  
INSULATION CRIMP: .180, F TYPE
- 3 #18-#14 AWG, 2.29-3.94 [.090-.155] DIA OR TWO #18'S WITH 1.90 [.075] MAX INSULATION

LOC	DIST	REVISIONS			
F	LN	DESCRIPTION	DATE	BY	APP
AF	50	C1	REV PER ECR 05-015812	15FEB06	JR RL

TIN 0.002032 [.000080] MIN	1217094-2
	1217094-1
FINISH	PART NO

THIS DRAWING IS A CONTROLLED DOCUMENT.		DRN	JR_RUTH	6/19/98
		CHK	M.S. FEHER	6/19/98
		APD	J. GILLUSPIE	6/19/98
		NAME	Tyco Electronics Corporation	
		Harrisburg, PA 17105-3608		
DIMENSIONS:		RECEPTACLE, POSITIVE LOCK, 6.35 [.250] SERIES		
INCHES		APPLICATION SPEC: 114-2074		
TOLERANCES UNLESS OTHERWISE SPECIFIED:		WEIGHT: -		
0 PLC	±	SIZE	A2 00779 C-1217094	
1 PLC	±	SCALE	5:1	
2 PLC	±	SHEET	1 of 1	
3 PLC	± 0.25 [.010]	REV	C1	
4 PLC	±			
ANGLES	±			
MATERIAL	H06 BRASS	CUSTOMER DRAWING		
FINISH	SEE TABLE			