

4

3

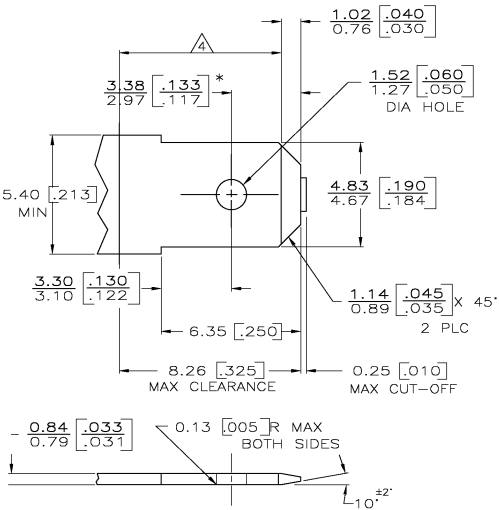
2

1

THIS DRAWING IS UNPUBLISHED. RELEASED FOR PUBLICATION
 BY TYCO ELECTRONICS CORPORATION. ALL RIGHTS RESERVED.

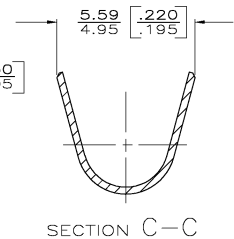
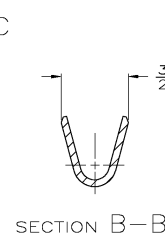
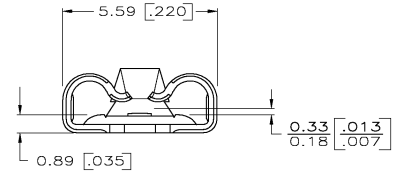
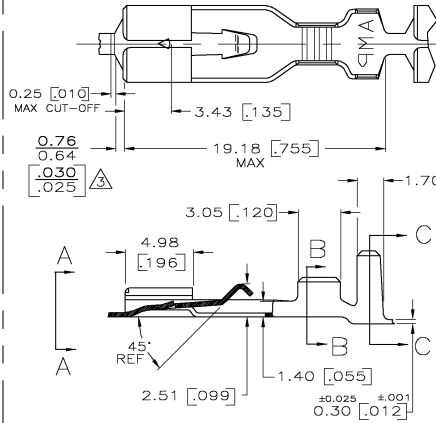
LOC	DIST	REVISIONS			
P	LTR	DESCRIPTION	DATE	BY	APP'D
AF	50				
		D	REV PER 063A-0504-03	18AUG03	JR KR

SUGGESTED MATING TAB



- MATL: #2 HARD BRASS OR NICKEL PLATED STEEL.
- NO BURRS PERMISSIBLE AT HOLE.
- TIN PLATING IS REQUIRED ON BRASS WHEN TERMINAL TEMPERATURE IS OVER 225° F. MUST BE FLAT WITHIN 0.076 [0.003] OVER THIS LENGTH.
- HOLE MUST BE SYMMETRICAL ABOUT TAB \pm WITHIN 0.076 [0.003].
- * TO BE USED ONLY WHEN SHOULDER IS ELIMINATED.

- DIMENSIONS IN BRACKETS ARE IN INCHES.
- CONTINUOUS STRIP ON REELS.
- THIS DIMENSIONS MUST BE MAINTAINED FOR PROPER FUNCTION OF THE LATCHING MECHANISM.



2.29 - 3.30 [.090 - .130]	0.5 - 1.4mm ² [20-16]	63313-1
INSULATION RANGE	WIRE SIZE	PART NO.
THIS DRAWING IS A CONTROLLED DOCUMENT.		
DIMENSIONS: INCHES 0 PLC ± - 1 PLC ± - 2 PLC ± - 3 PLC ± 0.25 .010 4 PLC ± - 5 PLC ± - ANGLES ± -		DWG. JR RUTH 5/21/97 CHK. G. YETTER 6/2/97 APP'D. R. KUZO 6/2/97 PROJECT SPEC. - APPLICATION SPEC. - WEIGHT - FINISH: TIN
MATERIAL: #6H BRASS FINISH: TIN		Tyco Electronics Corporation Harrisburg, PA 17105 RECEPTACLE, POSITIVE LOCK, .187 SERIES SIZE: A2 CASE CODE: 00779 DRAWING NO: 63313 RESTRICTED TO: - CUSTOMER DRAWING
SCALE: 1:1		SHEET 1 OF 1 REV D

AMP 1421-9 REV 31MAR2000

H:\vdm\ecmod\

63313

A